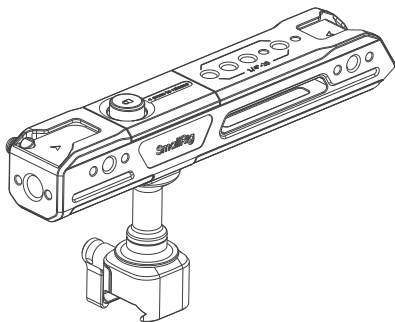


SmallRig



Rotating Top Handle

with NATO Clamp

旋转滑槽上提手柄

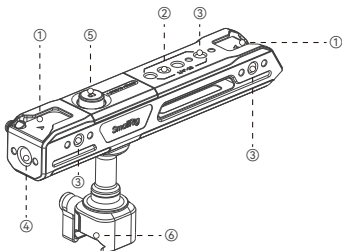
Operating Instruction / 操作指引

- Thank you for purchasing SmallRig's product.
感谢您购买 SmallRig 产品。
- Please read this Operating Instruction carefully.
使用本产品之前, 请仔细阅读操作指引。
- Please follow the safety warnings.
请注意所有警告提示并遵循使用操作指引的所有指令。

In the Box / 包装清单

Top Handle 上手提	× 1	NATO Rail 滑条	× 1
Operating Instruction 操作指引	× 1	Allen Wrench 六角扳手	× 1
Guarantee Card 保修卡	× 1		

Product Details / 产品介绍

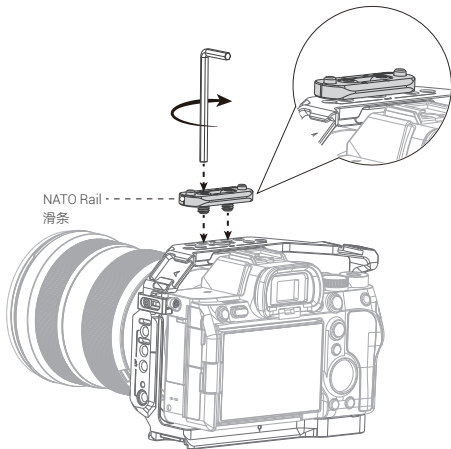


- | | |
|--|---------------------------------------|
| ① Cold Shoe Mount
冷靴 | ④ ARRI 3/8"-16 Locating Hole
阿莱定位孔 |
| ② 1/4"-20 Threaded Hole
1/4"-20 螺纹孔 | ⑤ Unlock Button
解锁按钮 |
| ③ 1/4"-20 Locating Hole
1/4"-20 定位孔 | ⑥ NATO Clamp
滑槽 |

Installation Instructions / 安装步骤

- * Before installation, please check whether the top of the cage built-in a NATO rail or not. If not, please use a Allen Wrench to fix the NATO rail onto the cage.
- 在安装前先检查拓展框顶部是否有滑条，如果没有，则先用六角扳手将滑条安装在拓展框顶部。

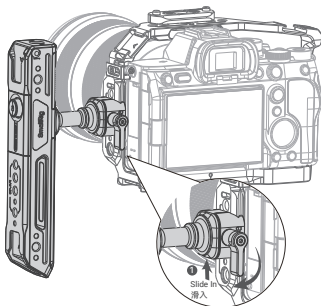
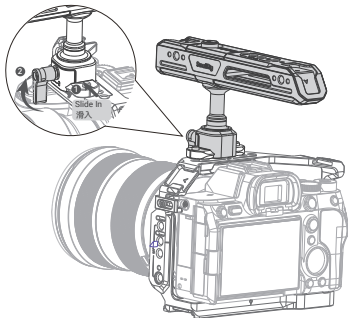
1



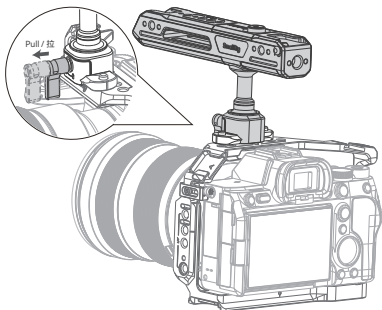
* The package does not include the camera.

* 相机机身需另购

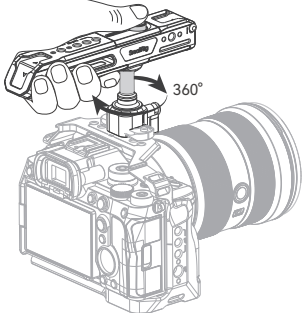
② Two types of use / 两种使用方式



③ Reverse use / 反向使用



Press / 按压



⚠ Warning / 警告

1. If you need to adjust the angle, be sure to hold the camera with your hand.
如果您需要调整角度，在进行一键旋转时请务必用手托住相机机身。
2. The 2 cold shoes on the bottom of the top handle cannot be used simultaneously.
上手提尾部2个冷靴无法同时使用。

Specifications / 产品参数

Product Dimensions 产品尺寸	6.4 × 3.2 × 1.6in 161.6 × 81.2 × 39.7mm
Product Weight 产品重量	8.3 ± 0.2oz 236.0 ± 5.0g
Material(s) 主要材质	Aluminum Alloy, Silicone 铝合金、硅胶

Specifications subject to change without prior notice. Please refer to the physical product for the most up-to-date information.

技术参数如有改动，以实物为准，恕不另行通知。

LQ-P1438-18

Manufacturer Email: support@smallrig.com

Manufacturer: Shenzhen Leqi Innovation Co., Ltd.

Add: Rooms 101, 701, 901, Building 4, Gonglianfuji Innovation Park, No. 58, Ping'an Road,
Dafu Community, Guanlan Street, Longhua District, Shenzhen, Guangdong, China.

制造商：深圳市乐其创新股份有限公司

地址：中国广东省深圳市龙华区观澜街道大富社区平安路58号共联富基创新园4栋101、701、901

Consignor: Shenzhen LC Co., Ltd.

Add: Room 201, Building 4, Gonglianfuji Innovation Park, No. 58, Ping'an Road,
Dafu Community, Guanlan Street, Longhua District, Shenzhen, Guangdong, China.

委托商：深圳市乐其创新股份有限公司

地址：中国广东省深圳市龙华区观澜街道大富社区平安路58号共联富基创新园4栋201

执行标准：GB/T 26572-2011

RoHS **CE**



Séparez les éléments avant de trier



中国制造

Made in China