

# SmallRig



## Monitor Support with Cold Shoe

Operating Instruction

SmallRig Monitor Support with Cold Shoe 3809B has been meticulously crafted to enhance monitor functionality, facilitating seamless screen monitoring with a total load capacity of 2.5kg / 5.5lb. The bottom cold shoe features an embedded silicone pad, offering versatile installation options on camera hot shoes or cage / handle cold shoe mounts preventing device scratches and ensuring a secure fit. The top 1/4"-20 screw features detachable locating pins to secure certain devices, preventing deviation and ensuring safety, and enables attachment of the monitors, microphones, lights, and more. The support allows horizontal 360° and vertical 180° adjustment, regulating the tension using a wrench. Additionally, the integrated 1/4"-20 threaded hole at the base facilitates seamless compatibility with a range of magic hand models (ID 3873, 3874, and 3875). Thumbscrews on the top and bottom feature wrench reinforcement holes for streamlined assembly and disassembly.

## Safety Guidelines

### 1. Environment

Do not use the product underwater, in extreme temperatures (e.g., freezing or direct heat), corrosive environments, or excessive dust. Dry metal parts immediately after liquid contact to prevent corrosion.

### 2. Load Capacity

Do not exceed the maximum weight capacity indicated on the product. Overloading risks structural failure, deformation, or accidental drops.

### 3. Cleaning & Maintenance

Clean surfaces with a dry, soft cloth. Avoid chemicals like alcohol or solvents. Ensure dry and ventilated conditions for long-term storage.

### 4. Structural Integrity

Do not modify the product (e.g., drilling, cutting)—this compromises structural integrity and increases drop risks.

### 5. Malfunctions

Stop use immediately if you notice deformation, unusual noises, or loose components, and contact support.

## In the Box

Monitor Support    × 1

Allen Wrench    × 1

# Product Details Display

1/4"-20 Screw

Rubber Pad

Upper Thumbscrew

Lower Thumbscrew

Cold Shoe Base



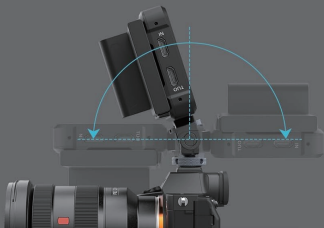
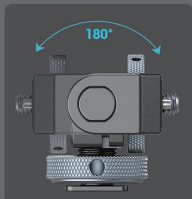
Silicone Pad

1/4"-20 Threaded Hole



# Multi-Angle Flexible Adjustment

Support to swivel 360° and tilt 180°, tightness adjustable on each axis

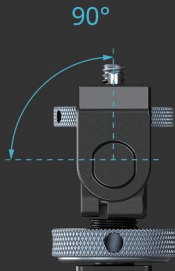




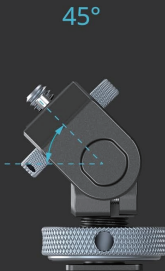
# Brilliant Carry Capacity

3.2kg horizontal carry capacity, 2.5kg 45° tilt carry capacity,  
2.3kg 30° tilt carry capacity

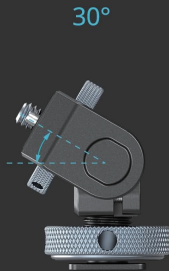
3.2kg



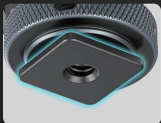
2.5kg



2.3kg



# Mini Size Brilliant Versatility



Bottom Cold Shoe



Top 1/4"-20 Screw



Bottom 1/4"-20  
Threaded Hole



Articulating Arm  
with Dual Ball Heads  
(ID: 2070)



### Step 1

Lock the monitor mount on the camera's hot shoe mount

### Step 2

Mount the monitor on the monitor mount via top 1/4"-20 screw



### Step 3

Hand-Tighten the upper & lower thumbscrew and also use with included Allen wrench for more secured

### Step 4

Flexible to adjust the angle as needed without other tools



# Package

ID: 3809B

Monitor Support × 1

Allen Wrench × 2



## Specifications

### Product Dimensions

42.7 × 30.0 × 49.8mm / 1.7 × 1.2 × 2.0in

### Product Weight

54.0 ± 5.0g / 1.9 ± 0.2oz

### Material(s)

Aluminum Alloy, Stainless Steel, Silicone

### Related Products

ID: (4487, 4899, 4900, 4886, 3873, 3874, 3875, 2905B)

Manufacturer Email: [support@smallrig.com](mailto:support@smallrig.com)

Manufacturer: Shenzhen Leqi Innovation Co., Ltd.

Add: Rooms 101, 701, 901, Building 4, Gonglianfuji Innovation Park, No. 58, Ping'an Road,  
Dafu Community, Guanlan Street, Longhua District, Shenzhen, Guangdong, China.

Consignor: Shenzhen LC Co., Ltd.

Add: Room 201, Building 4, Gonglianfuji Innovation Park, No. 58, Ping'an Road,  
Dafu Community, Guanlan Street, Longhua District, Shenzhen, Guangdong, China.

**RoHS**



*Séparez les éléments avant de trier*



Made in China