

SmallRig



**Cage with Handle for Sony Alpha
6100 Alpha 6300 Alpha 6400**

Operating Instruction

SmallRig Cage with Silicone Handle for Sony A6100 / A6300 / A6400 3164B is designed to protect the camera and provide multiple expansion interfaces. It securely locks the camera with one 1/4"-20 screw at the bottom and one M2 screw on the left side, ensuring stability without deviation. The cage features an ergonomic silicone handle for improved grip. The cage features multiple 1/4"-20 holes, 3/8"-16 ARRI locating holes for attaching accessories like the top handle (ID 3765), side handle (ID 4016) for handheld shooting, assisting with focusing, enhancing shooting stability, and allowing for monitor expansion using the top ARRI locating hole for attaching the monitor mount (ID 2903B). It has built-in cold shoe mounts for attaching microphones, lights, and other accessories. The bottom features an Arca-Swiss quick release plate, enabling swift transitions to Arca-Swiss tripod shooting. Holes on the left side and bottom of the cage are reserved for such accessories as shoulder straps (ID PSC2428). The bottom of the cage is equipped with a built-in magnetic Allen wrench for effortless assembly and disassembly.

Safety Guidelines

1. Environment

Do not use the product underwater, in extreme temperatures (e.g., freezing or direct heat), corrosive environments, or excessive dust. Dry metal parts immediately after liquid contact to prevent corrosion.

2. Load Capacity

Do not exceed the maximum weight capacity indicated on the product. Overloading risks structural failure, deformation, or accidental drops.

3. Cleaning & Maintenance

Clean surfaces with a dry, soft cloth. Avoid chemicals like alcohol or solvents. Ensure dry and ventilated conditions for long-term storage.

4. Structural Integrity

Do not modify the product (e.g., drilling, cutting)—this compromises structural integrity and increases drop risks.

5. Malfunctions

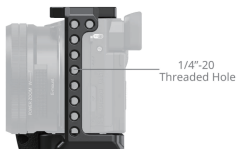
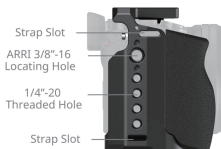
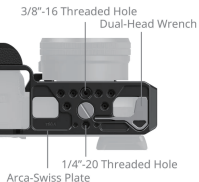
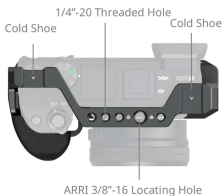
Stop use immediately if you notice deformation, unusual noises, or loose components, and contact support.

In the Box

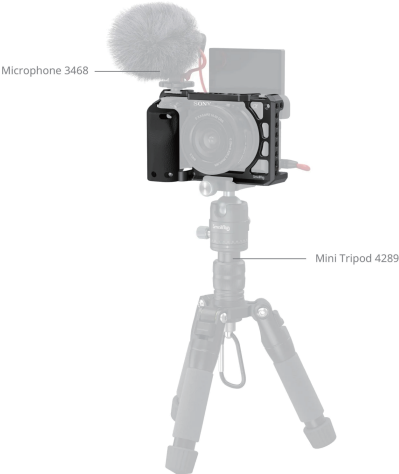
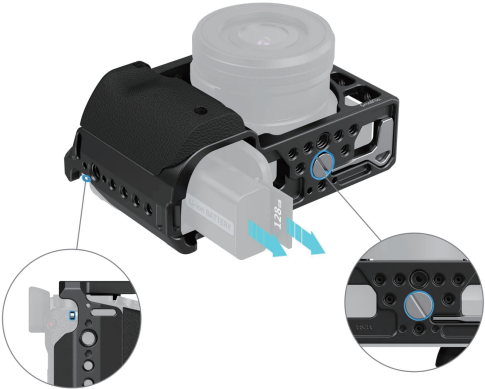
Cage with Silicone Handle × 1
Guarantee Card × 1

Allen Wrench × 1

Product Details



Easy to Use



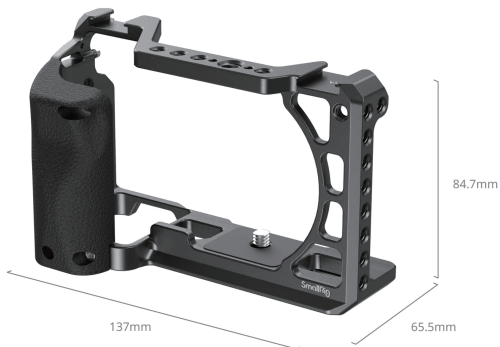
Monitor Mount 2903B



HDMI Cable Clamp 1693



Specifications



Product Dimensions: $5.2 \times 3.3 \times 2.6$ in / $131.8 \times 84.7 \times 65.7$ mm

Package Dimensions: $6.4 \times 4.8 \times 2.7$ in / $162.0 \times 122.5 \times 69.0$ mm

Product Weight: 6.9 ± 0.2 oz / 195.0 ± 5.0 g

Package Weight: 10.0 ± 0.2 oz / 283.0 ± 5.0 g

Material(s): Aluminum Alloy, Silicone, Stainless Steel

Manufacturer Email: support@smallrig.com

Manufacturer: Shenzhen Leqi Innovation Co., Ltd.

Add: Rooms 101, 701, 901, Building 4, Gonglianfuji Innovation Park, No. 58, Ping'an Road,
Dafu Community, Guanlan Street, Longhua District, Shenzhen, Guangdong, China.

Consignor: Shenzhen LC Co., Ltd.

Add: Room 201, Building 4, Gonglianfuji Innovation Park, No. 58, Ping'an Road,
Dafu Community, Guanlan Street, Longhua District, Shenzhen, Guangdong, China.



Séparez les éléments avant de trier



Made in China