

SmallRig



HawkLock H21 Quick Release Rosette Magic Arm (11")

Operating Instruction

SmallRig Quick Release Rosette Arm (11") 4489 is crafted from aerospace-grade aluminum alloy and stainless steel. It features an exclusive quick release slider patented structure with inner roll pins that enable secure vertical locking. The dual-head quick release 1/4"-20 screw design allows for external attachment of monitors, video lights, microphones, smartphones, iPads, action cameras, and more. When used with detachable pins, in conjunction with SmallRig's camera cages 4119B, 3084C, 4088B, and other monitors with matching locating holes, it effectively prevents device deviation, ensuring the safety of your equipment. The ball head offers 360-degree adjustment, ensuring smooth and flexible movements without stocking; spiral patterns on the ball head enhance friction, supporting up to 3kg / 6.6lbs loads. A spring has been added to the stainless steel rosette joint for smoother angle adjustments. The anti-skid design of the thumb lever incorporates thrust bearings for a comfortable, ergonomic grip, allowing for easy locking of the magic arm and ball head with a single press. CNC machined for durability, the unit includes padding on both mounts to prevent scratching of equipment.

Safety Guidelines

1. Environment

Do not use the product underwater, in extreme temperatures (e.g., freezing or direct heat), corrosive environments, or excessive dust. Dry metal parts immediately after liquid contact to prevent corrosion.

2. Load Capacity

Do not exceed the maximum weight capacity indicated on the product. Overloading risks structural failure, deformation, or accidental drops.

3. Cleaning & Maintenance

Clean surfaces with a dry, soft cloth. Avoid chemicals like alcohol or solvents. Ensure dry and ventilated conditions for long-term storage.

4. Structural Integrity

Do not modify the product (e.g., drilling, cutting)—this compromises structural integrity and increases drop risks.

5. Malfunctions

Stop use immediately if you notice deformation, unusual noises, or loose components, and contact support.

In the Box

Quick Release Rosette Arm × 1

Allen Wrench × 1

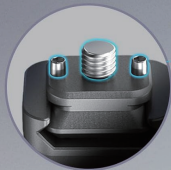


Exclusive QR-Slide Structure

Press the button to flare the pins, slide the rail into the groove, and lock it by releasing the button.

Anti-Twist Design

Built-in 1/4"-20 screw and
detachable locating pins.

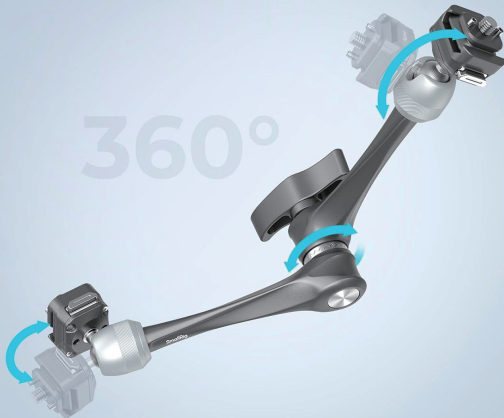


Load up to 3kg / 6.6lb

The ball head's surface features a spiral pattern that enhances friction for a load capacity of up to 3kg.

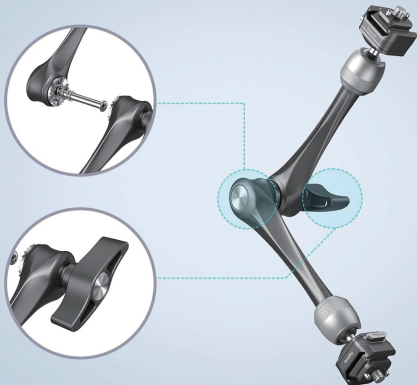


Adjustable at Any Angle



Comprehensive Locking System

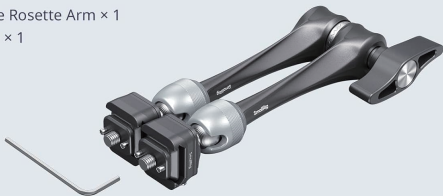
Feature springs to facilitate smoother angle adjustments.
Built-in thrust bearing, allowing for one-touch locking of
the magic arm and ball head.



Package Includes

Quick Release Rosette Arm × 1

Allen Wrench × 1



Product Parameters

ID

4489

Net Weight:

298.0 ± 5.0g / 10.5 ± 0.2oz

Product Dimension

154.0 × 65.0 × 53.0mm
/ 6.0 × 2.6 × 2.0in

Package Dimension

181.0 × 102.5 × 41.0mm
/ 7.1 × 4.0 × 1.6in

Package Weight:

356.0 ± 5.0g
/ 12.5 ± 0.2oz

Material(s)

Aluminum Alloy,
Stainless Steel, Silicone

Manufacturer Email: support@smallrig.com

Manufacturer: Shenzhen Leqi Innovation Co., Ltd.

Add: Rooms 101, 701, 901, Building 4, Gonglianfuji Innovation Park, No. 58, Ping'an Road,
Dafu Community, Guanlan Street, Longhua District, Shenzhen, Guangdong, China.

Consignor: Shenzhen LC Co., Ltd.

Add: Room 201, Building 4, Gonglianfuji Innovation Park, No. 58, Ping'an Road,
Dafu Community, Guanlan Street, Longhua District, Shenzhen, Guangdong, China.

RoHS



Séparez les éléments avant de trier



Made in China