

SmallRig



Arca-Type Mount Plate

Operating Instruction

SmallRig Arca-Type Quick Release Clamp for DJI Ronin S/Ronin SC and ZHIYUN Crane Series/ Weebill S Gimbals DBC2506 is designed to quickly remove the camera using an Arca L bracket or Arca plate from Arca-type fluid head to gimbals. The clamp attaches to the camera plate of gimbal via two 1/4"-20 screws in both vertical and horizontal direction. Featuring degree marks and M4 threads for DJI Ronin S/ Ronin SC Follow Focus Motor. You can also use it as a riser plate when using large diameter lens.

Safety Guidelines

1. Environment

Do not use the product underwater, in extreme temperatures (e.g., freezing or direct heat), corrosive environments, or excessive dust. Dry metal parts immediately after liquid contact to prevent corrosion.

2. Load Capacity

Do not exceed the maximum weight capacity indicated on the product. Overloading risks structural failure, deformation, or accidental drops.

3. Cleaning & Maintenance

Clean surfaces with a dry, soft cloth. Avoid chemicals like alcohol or solvents. Ensure dry and ventilated conditions for long-term storage.

4. Structural Integrity

Do not modify the product (e.g., drilling, cutting)—this compromises structural integrity and increases drop risks.

5. Malfunctions

Stop use immediately if you notice deformation, unusual noises, or loose components, and contact support.

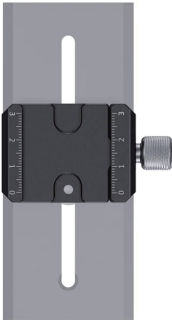
In the Box

Arca Baseplate	× 1	1/4"Screw	× 2
Hex Spanner	× 1	Guarantee Card	× 1

Product Details



Stable & Scalable



Marked in millimeters

Dual-sided index markings for quick rebalancing



M4 Threaded Holes

Accommodate Ronin S and Ronin SC original follow focus



Knob Screw

The knob screw can be adjusted by hand, making it easy to use



Specifications



Product Dimensions: 64.6 × 37.40 × 15mm

Package Dimensions: 110 × 130 × 40mm

Net Weight: 69g

Package Weight: 75g

Material(s): Aluminum Alloy

Compatibility:

DJI Ronin S / Ronin SC

ZHIYUN Crane 2 / 2S

ZHIYUN Crane 3 Lab

ZHIYUN Weebill-S / Weebill Lab

MOZA Air2

Manufacturer Email: support@smallrig.com

Manufacturer: Shenzhen Leqi Innovation Co., Ltd.

Add: Rooms 101, 701, 901, Building 4, Gonglianfuji Innovation Park, No. 58, Ping'an Road,
Dafu Community, Guanlan Street, Longhua District, Shenzhen, Guangdong, China.

Consignor: Shenzhen LC Co., Ltd.

Add: Room 201, Building 4, Gonglianfuji Innovation Park, No. 58, Ping'an Road,
Dafu Community, Guanlan Street, Longhua District, Shenzhen, Guangdong, China.



Made in China