

# SmallRig



## Handlebar Mounting Clamp (for Action Cameras)

Operating Instruction

SmallRig Handlebar Clamp with Action Camera Mount 4191 comprises a handlebar clamp and an action camera mount. Made of CNC machined aircraft-grade aluminum alloy and stainless steel for more sturdiness and durability, this highly compatible item supports any rod 22mm-32mm in diameter and particularly comes with two clamping distances that best suit common  $\varnothing$ 22mm and  $\varnothing$ 31.8mm handlebar by simply adjusting the gear, in which cases, the area of contact is increased, securing and protecting your camera while you are biking. It also features protective rubber pads to prevent scratches and increase clamping stability. The ballhead magic arm, which consists of two ball heads and a ballhead clamp, is connected to the handlebar clamp via an anti-twist and anti-off machine screw. Its 360-degree adjustable ball heads feature ring textures to help lock them down and prevent movement. There is on the bottom a hex hole for enhanced fastening with an Allen wrench and on the top one 1/4"-20 screw to allow attaching GoPro, insta360 X4 / 3, DJI Action 5 Pro / 4 / 3, AKASO, etc.

## **Safety Guidelines**

### **1. Environment**

Do not use the product underwater, in extreme temperatures (e.g., freezing or direct heat), corrosive environments, or excessive dust. Dry metal parts immediately after liquid contact to prevent corrosion.

### **2. Load Capacity**

Do not exceed the maximum weight capacity indicated on the product. Overloading risks structural failure, deformation, or accidental drops.

### **3. Cleaning & Maintenance**

Clean surfaces with a dry, soft cloth. Avoid chemicals like alcohol or solvents. Ensure dry and ventilated conditions for long-term storage.

### **4. Structural Integrity**

Do not modify the product (e.g., drilling, cutting)—this compromises structural integrity and increases drop risks.

## 5. Malfunctions

Stop use immediately if you notice deformation, unusual noises, or loose components, and contact support.

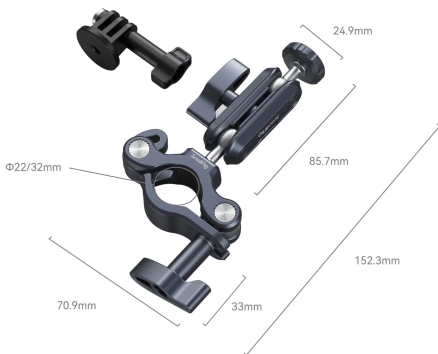
## In the Box

Handlebar Clamp                    × 1

Action Camera Mount           × 1

Guarantee Card                    × 1

## Product Details



## Key Features

- 1.Clamping distance shift for common 22mm and 31.8mm handlebar, safe and secure;
- 2.Compatible with original GoPro accessories;
- 3.22mm-32mm clamping distance, anti-slip cushions for more safety and stability;
- 4.Made of sturdy, durable aircraft-grade aluminum alloy and stainless steel.



Φ32mm



Φ22mm

## Compatibility:

Handlebar 22mm-32mm in diameter  
22mm and 31.8mm clamping distance shift



Φ22mm

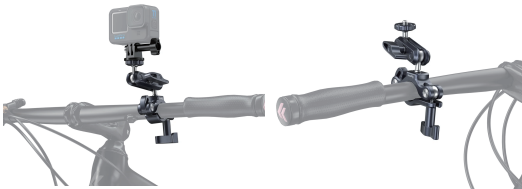


Φ32mm

## Note:

1. It is recommended to control the speed under 100km/h on and off-road.
2. Please do not disassemble the original machine screw, otherwise it may lead to deflection of the original ballhead magic arm.
3. Please do not disassemble the original machine screw to replace the original ballhead magic arm, otherwise, it may lead to thread failure.

Recommended to use with a cable tether



## Specifications

Product Dimensions: 172.2 x 81.2 x 27.9mm

Package Dimensions: 137 x 104 x 51.5 mm

Product Weight: 185.0 ± 5.0g

Package Weight: 226 ± 5.0g

Material(s): Aluminum Alloy, Stainless Steel, Silicone

Manufacturer Email: support@smallrig.com  
Manufacturer: Shenzhen Leqi Innovation Co., Ltd.  
Add: Rooms 101, 701, 901, Building 4, Gonglianfuji Innovation Park, No. 58, Ping'an Road,  
Dafu Community, Guanlan Street, Longhua District, Shenzhen, Guangdong, China.

Consignor: Shenzhen LC Co., Ltd.  
Add: Room 201, Building 4, Gonglianfuji Innovation Park, No. 58, Ping'an Road,  
Dafu Community, Guanlan Street, Longhua District, Shenzhen, Guangdong, China.

**RoHS** **CE** 



*Séparez les éléments avant de trier*



Made in China