

SmallRig



Magic Arm with Crab-Shaped Clamp

魔术手蟹钳固定夹

Operating Instruction / 操作指引

- Thank you for purchasing SmallRig's product.
感谢您购买 SmallRig 产品。
- Please read this Operating Instruction carefully.
使用本产品之前，请仔细阅读操作指引。
- Please follow the safety warnings.
请注意所有警告提示并遵循使用操作指引的所有指令。

Safety Guidelines / 注意事项

1. Environment

环境使用

Do not use the product underwater, in extreme temperatures (e.g., freezing or direct heat), corrosive environments, or excessive dust. Dry metal parts immediately after liquid contact to prevent corrosion.

请勿在水下、极端温度（如冷冻或高温暴晒）、强腐蚀性或多尘环境中使用本产品。金属部件接触液体后请立即擦干，避免长期接触水分导致锈蚀。

2. Load Capacity

承重限制

Do not exceed the maximum weight capacity indicated on the product. Overloading risks structural failure, deformation, or accidental drops.

请勿超过产品标注的最大承重限制。超载可能导致结构变形、断裂或意外跌落设备。

3. Cleaning & Maintenance

清洁与维护

Clean surfaces with a dry, soft cloth. Avoid chemicals like alcohol or solvents. Ensure dry and ventilated conditions for long-term storage. 使用干燥软布清洁表面，避免酒精、溶剂等化学试剂直接接触产品。长期存放前请确保环境干燥通风。

4. Structural Integrity

产品结构

Do not modify the product (e.g., drilling, cutting)—this compromises structural integrity and increases drop risks.

请勿自行对产品进行钻孔、切割或改造，以免破坏结构强度，增加设备跌落风险。

4. Malfunctions

异常处理

Stop use immediately if you notice deformation, unusual noises, or loose components, and contact support.

若产品出现变形、异响或部件松动，请立即停止使用并联系客服。

- * Precautions: Do not disassemble the crab-shaped clamp and magic arm, as it may compromise functions such as the anti-twist design.

注意事项：不建议自行拆分蟹钳夹和魔术手，可能导致支架防偏转等功能失效。

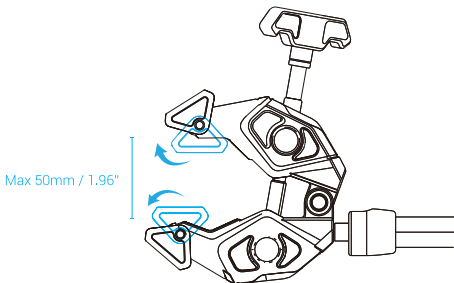
In the Box / 包装清单

Knurled Magic Arm 齿轮魔术手	× 1	Crab-Shaped Clamp 蟹钳夹	× 1
Allen Wrench 六角扳手	× 1	Guarantee Card 保修卡	× 1

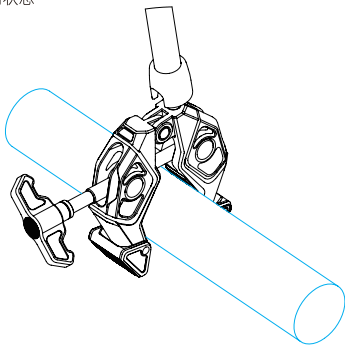
Instructions / 使用方法

1. Max clamping range is 50mm / 1.96"

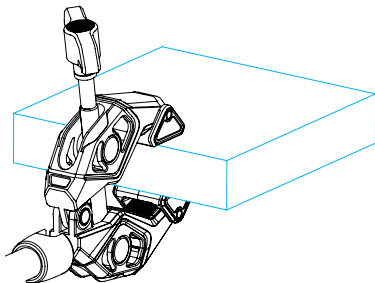
最大可调节至50mm



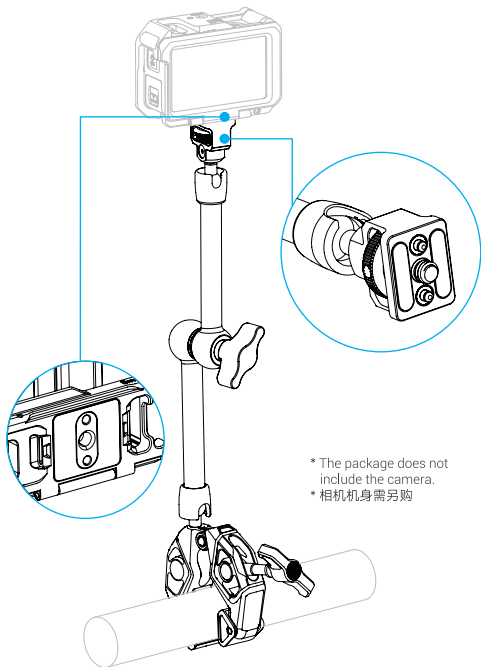
2. Tighten around the round object
柱体使用状态



3. Tighten to a flat surface
平面使用状态



4. Unlock the magic knob and connect one end to the camera
解锁魔术手旋钮,一端连接相机



Specifications / 产品参数

Product Dimensions 产品尺寸	77.6 × 38.1 × 9.4 in 197.0 × 97.0 × 24.0 mm
Product Weight 产品重量	13.3 ± 0.2oz 378.0 ± 5.0g
Material(s) 主要材质	Aluminum Alloy 铝合金
Payload 支架承重	52.9oz 1.5kg

* Specifications subject to change without prior notice. Please refer to the physical product for the most up-to-date information.
技术参数如有改动，以实物为准，恕不另行通知。

执行标准: GB/T 26572-2011

Manufacturer Email: support@smallrig.com

Manufacturer: Shenzhen Legi Innovation Co., Ltd.

Add: Rooms 101, 701, 901, Building 4, Gonglianfuji Innovation Park,
No. 58, Ping'an Road, Dafu Community, Guanlan Street, Longhua
District, Shenzhen, Guangdong, China.

制造商: 深圳市乐其创新股份有限公司

地址: 中国广东省深圳市龙华区观澜街道大富社区平安路58号共联富基
创新园4栋101、701、901

Consignor: Shenzhen LC Co., Ltd.

Add: Room 201, Building 4, Gonglianfuji Innovation Park, No. 58,
Ping'an Road, Dafu Community, Guanlan Street, Longhua
District, Shenzhen, Guangdong, China.

委托商: 深圳市乐长科技有限公司

地址: 中国广东省深圳市龙华区观澜街道大富社区平安路58号共联富基
创新园4栋201

RoHS



FR
LE TRI
+ FACILE



Boîte 1



Papier 5



BAC
DE TRI



中国制造

Made in China

Séparez les éléments avant de trier