

# SmallRig



## Mount Plate Compatible with ARRI Rosette

Operating Instruction

SmallRig Arri Standard Rosette Bolt-On Mount (M6 Thread) SAP2804 is a multi-functional Arri Rosette mount. It can be attached to cage, rosette handle and other accessories with M6 Arri Rosette, such as cage 2203, rosette handle 1941/1891. Two 1/4"-20 are designed inside of the product, the anti-loose design could make the screws never lose. M6 Arri standard rosette is only 38g, looks tiny and lightweight.

## Safety Guidelines

### 1. Environment

Do not use the product underwater, in extreme temperatures (e.g., freezing or direct heat), corrosive environments, or excessive dust. Dry metal parts immediately after liquid contact to prevent corrosion.

### 2. Load Capacity

Do not exceed the maximum weight capacity indicated on the product. Overloading risks structural failure, deformation, or accidental drops.

### 3. Cleaning & Maintenance

Clean surfaces with a dry, soft cloth. Avoid chemicals like alcohol or solvents. Ensure dry and ventilated conditions for long-term storage.

### 4. Structural Integrity

Do not modify the product (e.g., drilling, cutting)—this compromises structural integrity and increases drop risks.

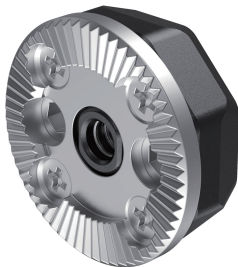
### 5. Malfunctions

Stop use immediately if you notice deformation, unusual noises, or loose components, and contact support.

## In the Box

Arri rosette	× 1	Guarantee Card	× 1
Hex Spanner	× 1		

## Product Details



## **Pre-order Only IMPORTANT NOTES about pre-order items:**

1. Pre-order can be canceled and refunded before shipping, no cancellation fee.
2. When PRE-ORDER products are included, package will be shipped when all products are available. Please check out for regular products separately if immediate shipping is needed.
3. It is estimated to be shipped out on April 30, 2020.



## **Key Features:**

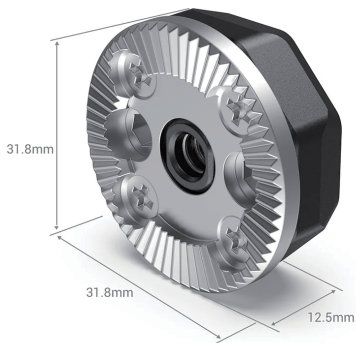
1. Arri standard rosette, rosette locks firmly.
2. The anti-loose design, the screws could never lose.
3. Convenient operation, lock in two steps.
4. Tiny and lightweight

## Compatibility:

Arri rosette with M6 screw



# Specifications



Product Dimensions: 31.8 x 31.8 x 12.5mm

Package Dimensions: 63 x 50 x 40mm

Net Weight: 38g

Package Weight: 59g

Material(s): Aluminum Alloy



Mani

Manufacturer: Shenzhen Leqi Innovation Co., Ltd.

Add: Rooms 101, 701, 901, Building 4, Gonglianfuji Innovation Park, No. 58, Ping'an Road, Dafu Community, Guanlan Street, Longhua District, Shenzhen, Guangdong, China.

Consignor: Shenzhen LC Co., Ltd.

Add: Room 201, Building 4, Gonglianfuji Innovation Park, No. 58, Ping'an Road, Dafu Community, Guanlan Street, Longhua District, Shenzhen, Guangdong, China.

**RoHS**

**CE**



**FR**  
**LE TRI**  
**+ FACILE**



Boîte 1



+ Papier 5



BAC DE TRI

*Séparez les éléments avant de trier*



**RECICLA**  
**Al Azul**

**合格证**  
已检验

Made in China