

# SmallRig



## Low-profile NATO Rail 90mm

Operating Instruction

SmallRig Low-profile NATO Rail 90mm BUN2484 is fixed to your camera rig by two 1/4"-20 screws. It is 90mm long, compatible with NATO accessories such as clamps, handles and monitor holders, enabling you to quick attach and release the rig components. The safety pins on both ends prevents accessories from accidentally sliding off.

## Safety Guidelines

### 1. Environment

Do not use the product underwater, in extreme temperatures (e.g., freezing or direct heat), corrosive environments, or excessive dust. Dry metal parts immediately after liquid contact to prevent corrosion.

### 2. Load Capacity

Do not exceed the maximum weight capacity indicated on the product. Overloading risks structural failure, deformation, or accidental drops.

### 3. Cleaning & Maintenance

Clean surfaces with a dry, soft cloth. Avoid chemicals like alcohol or solvents. Ensure dry and ventilated conditions for long-term storage.

### 4. Structural Integrity

Do not modify the product (e.g., drilling, cutting)—this compromises structural integrity and increases drop risks.

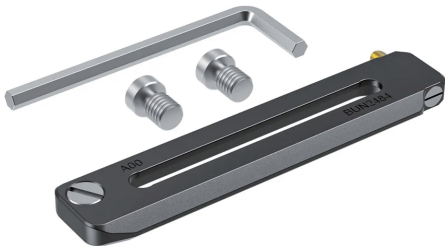
### 5. Malfunctions

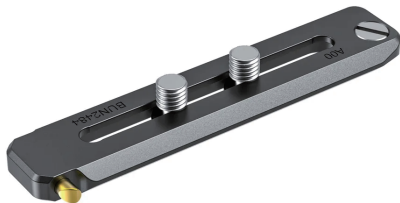
Stop use immediately if you notice deformation, unusual noises, or loose components, and contact support.

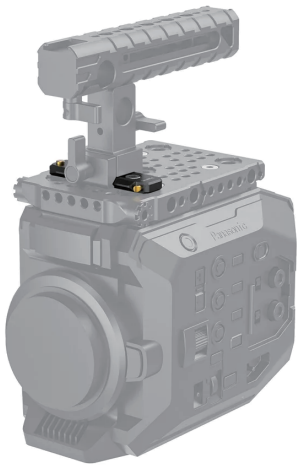
## In the Box

NATO Rail	× 1	1/4 Screw	× 1
Hex Spanner	× 1	Guarantee Card	× 1

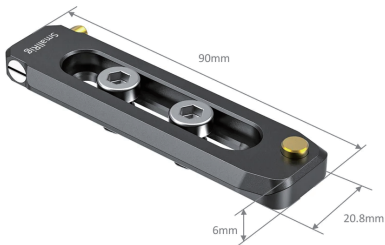
## Product Details







# Specifications



Product Dimensions: 21 x 90 x 6mm

Package Dimensions: 110 x 130 x 40mm

Net Weight: 21g

Package Weight: 42g

Materials: Aluminum Alloy

\*Please note the import tax may occur.

Manufacturer Email: [support@smallrig.com](mailto:support@smallrig.com)  
Manufacturer: Shenzhen Leqi Innovation Co., Ltd.  
Add: Rooms 101, 701, 901, Building 4, Gonglianfuji Innovation Park, No. 58, Ping'an Road,  
Dafu Community, Guanlan Street, Longhua District, Shenzhen, Guangdong, China.

Consignor: Shenzhen LC Co., Ltd.  
Add: Room 201, Building 4, Gonglianfuji Innovation Park, No. 58, Ping'an Road,  
Dafu Community, Guanlan Street, Longhua District, Shenzhen, Guangdong, China.

**RoHS** **CE** 



*Séparez les éléments avant de trier*



Made in China