

SmallRig



15mm Rod Clamp (for Top Handle)

Operating Instruction

SmallRig 15mm Single Rod Clamp 1995 is locked into the front end of Top Handle 1955 and 1984 via two M4 screws. It also supports Magic Arm 2070B, Ball Head 2163, etc. through the built-in 1/4"-20 threaded hole when working with 15mm rod system, and quickly locks or release rod via a thumb knob.

Safety Guidelines

1. Environment

Do not use the product underwater, in extreme temperatures (e.g., freezing or direct heat), corrosive environments, or excessive dust. Dry metal parts immediately after liquid contact to prevent corrosion.

2. Load Capacity

Do not exceed the maximum weight capacity indicated on the product. Overloading risks structural failure, deformation, or accidental drops.

3. Cleaning & Maintenance

Clean surfaces with a dry, soft cloth. Avoid chemicals like alcohol or solvents. Ensure dry and ventilated conditions for long-term storage.

4. Structural Integrity

Do not modify the product (e.g., drilling, cutting)—this compromises structural integrity and increases drop risks.

5. Malfunctions

Stop use immediately if you notice deformation, unusual noises, or loose components, and contact support.

In the Box

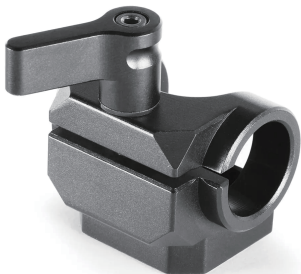
Rod Clamp	× 1	Allen Wrench	× 1
M4 Screw	× 2	Guarantee Card	× 1

Product Details



Key Features:

1. Locked into the front end of Top Handle 1955 and 1984;
2. Built-in 1/4"-20 threaded hole supports magic arm, ball head, etc. for 15mm rod system;
3. Quickly locks or release rod via a thumb knob.





Compatibility: Top Handle 1955 & 1984 / 15mm rod



Specifications



Product Dimensions: 41.0 x 33.0 x 25.5mm

Package Dimensions: 125.0 x 102.0 x 42.0mm

Product Weight: 48.0 ± 5.0g

Package Weight: 71.0 ± 5.0g

Material(s): Aluminum Alloy

Manufacturer Email: support@smallrig.com
Manufacturer: Shenzhen Leqi Innovation Co., Ltd.

Add: Rooms 101, 701, 901, Building 4, Gonglianfuji Innovation Park, No. 58, Ping'an Road,
Dafu Community, Guanlan Street, Longhua District, Shenzhen, Guangdong, China.

Consignor: Shenzhen LC Co., Ltd.

Add: Room 201, Building 4, Gonglianfuji Innovation Park, No. 58, Ping'an Road,
Dafu Community, Guanlan Street, Longhua District, Shenzhen, Guangdong, China.



Séparez les éléments avant de trier

Made in China