

# SmallRig



## **HawkLock H18 Quick Release Support with Cold Shoe**

Operating Instruction

SmallRig HawkLock H18 Quick Release Support with Cold Shoe 4500 consists of a quick release cold shoe adapter and a quick release cold shoe baseplate. With one click, the anti-detachment column at the bottom of the quick release adapter, combined with the groove design on the top of the baseplate, locks the cold shoe in place, effectively preventing it from slipping and ensuring smooth and safe assembly. It can hold up to 800g / 28.2oz. The top of the quick release cold shoe adapter is equipped with silicone pads to avoid scratches on the cold shoe accessories while ensuring a more stable connection and reducing shaking. The adapter can convert ordinary cold shoe accessories (such as LED video light, microphone, etc.) into those featuring quick release design, making it more efficient and time-saving. The baseplate is equipped with spring-loaded locating pins to support SmallRig action camera cages like 4119B, 3084C, 4088B, and various others with locating holes to ensure safety and stability.

## Safety Guidelines

### 1. Environment

Do not use the product underwater, in extreme temperatures (e.g., freezing or direct heat), corrosive environments, or excessive dust. Dry metal parts immediately after liquid contact to prevent corrosion.

### 2. Load Capacity

Do not exceed the maximum weight capacity indicated on the product. Overloading risks structural failure, deformation, or accidental drops.

### 3. Cleaning & Maintenance

Clean surfaces with a dry, soft cloth. Avoid chemicals like alcohol or solvents. Ensure dry and ventilated conditions for long-term storage.

### 4. Structural Integrity

Do not modify the product (e.g., drilling, cutting)—this compromises structural integrity and increases drop risks.

### 5. Malfunctions

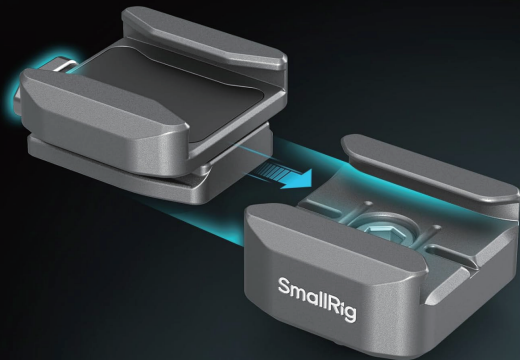
Stop use immediately if you notice deformation, unusual noises, or loose components, and contact support.

## In the Box

Quick Release Cold Shoe Adapter	× 1
Quick Release Cold Shoe Baseplate	× 1

# Exclusive Quick Release Cold Shoe

Press the button and slide in the cold shoe, and release the button to lock it in place, enabling effortless and time-saving assembly



**SmallRig**

## Insert from Either Side

The QR plate can be inserted from either side, however it must then be removed from that same side



**vs**

**Other**

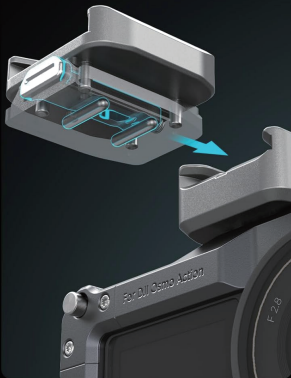


One Side Mounting



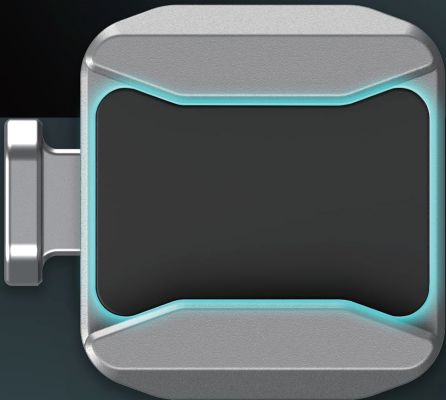
# Triple Locking Structures

The bottom of the quick release adapter features anti-detachment pins and two through grooves to firmly lock the adapter, ensuring smooth and safe assembly.



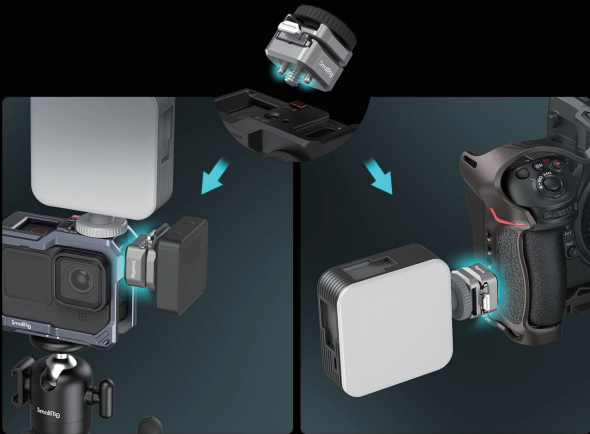
## Silicone Pad

The top of the quick release cold shoe adapter is equipped with silicone pads to avoid scratches on the cold shoe accessories



# Versatile Mounting Solution

The baseplate is equipped with spring-loaded locating pins to mount on cage or action camera cages (ID: 4119B, 3084C, 4088B), and various with 1/4"-20 screws



# Load up to 800g / 1.762lb

The quick release cold shoe mount only weight 37g / 0.08lb,  
but it can support 800g / 1.762lb accessories  
(such as LED video light, microphone, etc.)



Manufacturer Email: [support@smallrig.com](mailto:support@smallrig.com)

Manufacturer: Shenzhen Leqi Innovation Co., Ltd.

Add: Rooms 101, 701, 901, Building 4, Gonglianfuji Innovation Park, No. 58, Ping'an Road,  
Dafu Community, Guanlan Street, Longhua District, Shenzhen, Guangdong, China.

Consignor: Shenzhen LC Co., Ltd.

Add: Room 201, Building 4, Gonglianfuji Innovation Park, No. 58, Ping'an Road,  
Dafu Community, Guanlan Street, Longhua District, Shenzhen, Guangdong, China.

**RoHS**



*Séparez les éléments avant de trier*



Made in China