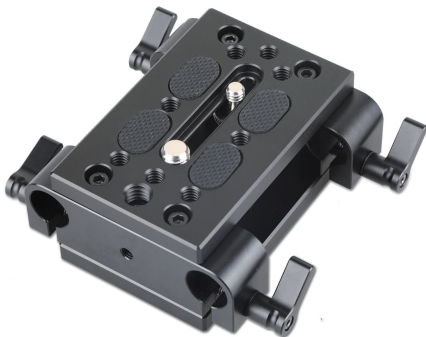


SmallRig



Bottom Mount Plate (with Dual 15mm Rod Clamp)

Operating Instruction

SmallRig Tripod Mounting Kit W/15mm Rail Block 1798 is combined by two SmallRig Tripod mounting plate w/15mm rail block. Used for long length, front heavy, camera packages. Attach it to the tripod plate with a 3/8"-16 screw and 1/4"-20 screw, then you can mount your dovetail base plate on it. It clamps onto 15mm rails for accessories attachment, such as follow focus, matte box, etc. The 40mm groove makes it possible to balance a front heavy camera on your tripod properly.

Safety Guidelines

1. Environment

Do not use the product underwater, in extreme temperatures (e.g., freezing or direct heat), corrosive environments, or excessive dust. Dry metal parts immediately after liquid contact to prevent corrosion.

2. Load Capacity

Do not exceed the maximum weight capacity indicated on the product. Overloading risks structural failure, deformation, or accidental drops.

3. Cleaning & Maintenance

Clean surfaces with a dry, soft cloth. Avoid chemicals like alcohol or solvents. Ensure dry and ventilated conditions for long-term storage.

4. Structural Integrity

Do not modify the product (e.g., drilling, cutting)—this compromises structural integrity and increases drop risks.

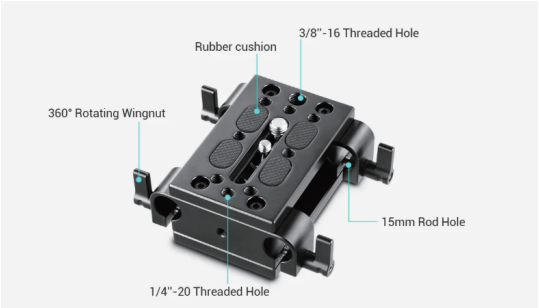
5. Malfunctions

Stop use immediately if you notice deformation, unusual noises, or loose components, and contact support.

In the Box

Base Plate	× 2	15mm Rail Block 840	× 2
1/4"-20 Screw	× 1	3/8"-16 Screw	× 1
Spanner	× 1	Guarantee Card	× 1

Product Details



Product selling point

1. Compatible with SmallRig Cage, Manfrotto, ARRI or other plate;



2. Available for camera mounting;

3. Convenient for camera adjusting and weight balance.

**Provides two types fixing screws
fits camcorder and DSLR**



Each wingnut enables 360° rotation

How to use

1. Lift up on the lever
2. Rotate it around the hex screw head
3. Back down in the right position





Specifications



Package Includes:

2x Base Plate

2x 15mm Rail Block 840

1x 1/4"-20 Screw

1x 3/8"-16 Screw

1x Spanner

Manufacturer Email: support@smallrig.com

Manufacturer: Shenzhen Leqi Innovation Co., Ltd.

Add: Rooms 101, 701, 901, Building 4, Gonglianfuji Innovation Park, No. 58, Ping'an Road,
Dafu Community, Guanlan Street, Longhua District, Shenzhen, Guangdong, China.

Consignor: Shenzhen LC Co., Ltd.

Add: Room 201, Building 4, Gonglianfuji Innovation Park, No. 58, Ping'an Road,
Dafu Community, Guanlan Street, Longhua District, Shenzhen, Guangdong, China.

RoHS



Séparez les éléments avant de trier



Made in China