

SmallRig



15mm Rod Clamp

Operating Instruction

SmallRig Super lightweight NEW 15mm-RailBlock v3, only 50g Net weight, comes with optional Black or Red Ratchet Wingnut. The new 15mm-RailBlock-v3 comes with 1/4"-20 standard thread, compatible with RED camera, Red Rig and other 15mm DSLR Camera Rig, 15mm Cage.

Safety Guidelines

1. Environment

Do not use the product underwater, in extreme temperatures (e.g., freezing or direct heat), corrosive environments, or excessive dust. Dry metal parts immediately after liquid contact to prevent corrosion.

2. Load Capacity

Do not exceed the maximum weight capacity indicated on the product. Overloading risks structural failure, deformation, or accidental drops.

3. Cleaning & Maintenance

Clean surfaces with a dry, soft cloth. Avoid chemicals like alcohol or solvents. Ensure dry and ventilated conditions for long-term storage.

4. Structural Integrity

Do not modify the product (e.g., drilling, cutting)—this compromises structural integrity and increases drop risks.

5. Malfunctions

Stop use immediately if you notice deformation, unusual noises, or loose components, and contact support.

In the Box

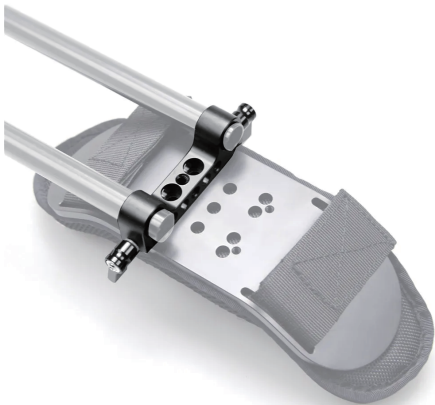
15mm-railblock-3	× 1	1/4" screw (short)	× 2
2 x 1/4" screw (long)	× 2	Hex Spanner	× 1
Guarantee Card	× 1		

Product Details



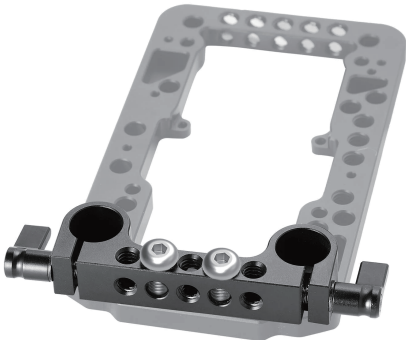
Easy to Use

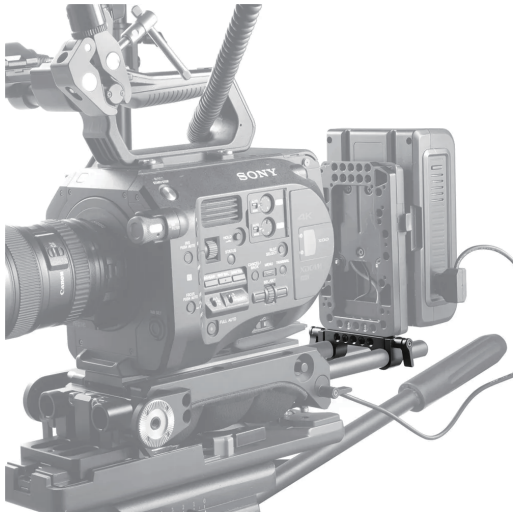
Super lightweight NEW 15mm-RailBlock v3, only 50g Net weight, comes with optional Black or Red Ratchet Wingnut.



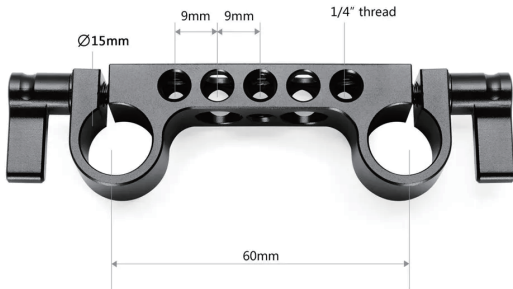
The new 15mm-RailBlock-v3 comes with 1/4"-20 standard thread

The NEW 15mm-RailBlock-v3 comes with 1/4"-20 standard thread, compatible with RED camera, Red Rig and other 15mm DSLR Camera Rig, 15mm Cage.





Specifications



Material: Aluminum Alloy

*Please note the import duty may occur, and it should be on buyer's side.

Manufacturer Email: support@smallrig.com

Manufacturer: Shenzhen Leqi Innovation Co., Ltd.

Add: Rooms 101, 701, 901, Building 4, Gonglianfuji Innovation Park, No. 58, Ping'an Road,
Dafu Community, Guanlan Street, Longhua District, Shenzhen, Guangdong, China.

Consignor: Shenzhen LC Co., Ltd.

Add: Room 201, Building 4, Gonglianfuji Innovation Park, No. 58, Ping'an Road,
Dafu Community, Guanlan Street, Longhua District, Shenzhen, Guangdong, China.

RoHS



Séparez les éléments avant de trier



Made in China