

SmallRig



Thumb Grip for Sony Alpha 7C II / Alpha 7CR / Alpha 7C

Operating Instruction

SmallRig Thumb Grip for Sony Alpha 7C II / Alpha 7CR / Alpha 7C (Sliver) 4818 is designed to enhance the grip and improve safety when holding the camera with one hand. The thumb grip is easily installed by sliding into the camera hot shoe. Built-in silicone pads protect the camera body and hot shoe electronic components from dust, rust, and electronic shorts. The concave design of the grip improves safety and enhances convenience while one-handed shooting, facilitating content creation. Its built-in cold shoe interface can be used to expand accessories such as fill lights and microphones.

Safety Guidelines

1. Environment

Do not use the product underwater, in extreme temperatures (e.g., freezing or direct heat), corrosive environments, or excessive dust. Dry metal parts immediately after liquid contact to prevent corrosion.

2. Load Capacity

Do not exceed the maximum weight capacity indicated on the product. Overloading risks structural failure, deformation, or accidental drops.

3. Cleaning & Maintenance

Clean surfaces with a dry, soft cloth. Avoid chemicals like alcohol or solvents. Ensure dry and ventilated conditions for long-term storage.

4. Structural Integrity

Do not modify the product (e.g., drilling, cutting)—this compromises structural integrity and increases drop risks.

5. Malfunctions

Stop use immediately if you notice deformation, unusual noises, or loose components, and contact support.

In the Box

Thumb Grip

× 1

Guarantee Card

× 1

Product Details



Cold Shoe

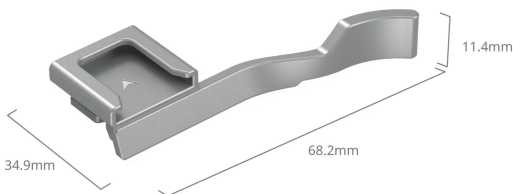


Easy to Use

Mont on the Camera Cage via Nato Rail.



Specifications



Product Dimensions: 68.3 x 34.3 x 11.4mm / 2.7 x 1.4 x 0.5in

Package Dimensions: 86.0 x 77.5 x 25.0mm / 3.4 x 3.1 x 1.0in

Product Weight: 8.0± 2.0g / 0.28 ± 0.07oz

Package Weight: 43.0± 5.0g / 1.5 ± 0.2oz

Material(s): Aluminum Alloy, Silicone

Color: Silver(4818) / Black(4820)

Compatibility:

Sony Alpha 7C II / Alpha 7CR / Alpha 7C

Manufacturer Email: support@smallrig.com

Manufacturer: Shenzhen Leqi Innovation Co., Ltd.

Add: Rooms 101, 701, 901, Building 4, Gonglianfuji Innovation Park, No. 58, Ping'an Road,
Dafu Community, Guanlan Street, Longhua District, Shenzhen, Guangdong, China.

Consignor: Shenzhen LC Co., Ltd.

Add: Room 201, Building 4, Gonglianfuji Innovation Park, No. 58, Ping'an Road,
Dafu Community, Guanlan Street, Longhua District, Shenzhen, Guangdong, China.



Séparez les éléments avant de trier

Made in China