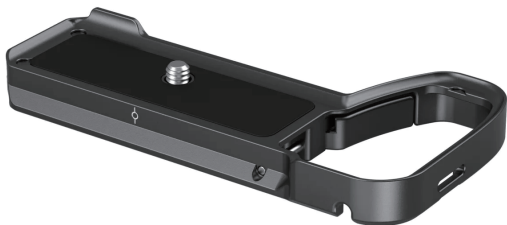


SmallRig



Bottom Mount Plate (for Sony Alpha 6700)

Operating Instruction

SmallRig Bottom Mount Plate for Sony Alpha 6700 4338 is designed to improve handgrip feeling and quickly mount onto tripod or gimbals, while protecting the bottom of the camera. Locking A6700 via one 1/4"-20 screw and the raised edge, the baseplate also features cushions to prevent scratches and twisting. Its hinge arm at the battery door better fits camera curve and leaves room for pinkie for more comfort. The Arca-Swiss quick release plate on the bottom supports DJI RS 2 / RSC 2 / RS 3 / RS 3 Pro gimbals as well as DJI RS 2 / RSC 2 gimbal's quick-release plate and Arca-Type Quick Release Plate 3154. At the bottom there are QD socket, compatible with QD shoulder strap, and it also reserves waist strap holes for a Hand Strap 3848. Besides, a magnetic wrench is included for easy disassembly and assembly.

Safety Guidelines

1. Environment

Do not use the product underwater, in extreme temperatures (e.g., freezing or direct heat), corrosive environments, or excessive dust. Dry metal parts immediately after liquid contact to prevent corrosion.

2. Load Capacity

Do not exceed the maximum weight capacity indicated on the product. Overloading risks structural failure, deformation, or accidental drops.

3. Cleaning & Maintenance

Clean surfaces with a dry, soft cloth. Avoid chemicals like alcohol or solvents. Ensure dry and ventilated conditions for long-term storage.

4. Structural Integrity

Do not modify the product (e.g., drilling, cutting)—this compromises structural integrity and increases drop risks.

5. Malfunctions

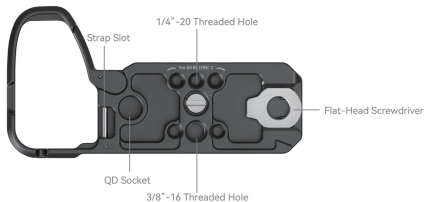
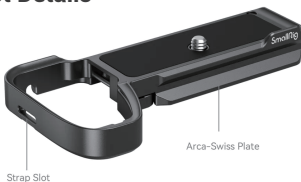
Stop use immediately if you notice deformation, unusual noises, or loose components, and contact support.

In the Box

Guarantee Card × 1

Baseplate × 1

Product Details



Multiple Installation Points

Multiple Installation Points



1/4\"-20 Threaded Holes

Strap Slot

Quick Release Plate for Arca

QD Socket

Quickly Scene Switching

Quickly Scene Switching

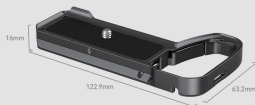
Integrated Swiss quick release plate for Arca facilitates fast switching between handheld, tripods or gimbals for DJI RS 2 / RSC 2 / RS 3 / RS 3 Pro shooting modes



Specifications

Specifications

Product Dimensions	122.9 × 63.2 × 16mm / 4.8 × 2.5 × 0.6in
Package Dimensions	157 × 82 × 43mm / 6.2 × 3.2 × 1.7in
Product Weight	68 ± 5g / 2.4 ± 0.2oz
Package Weight	104.5 ± 5.0g / 3.7 ± 0.2oz
Material(s)	Aluminum Alloy, Stainless Steel
Compatibility	for Sony A6700
ID	4338



Manufacturer Email: support@smallrig.com

Manufacturer: Shenzhen Leqi Innovation Co., Ltd.

Add: Rooms 101, 701, 901, Building 4, Gonglianfuji Innovation Park, No. 58, Ping'an Road, Dafu Community, Guanlan Street, Longhua District, Shenzhen, Guangdong, China.

Consignor: Shenzhen LC Co., Ltd.

Add: Room 201, Building 4, Gonglianfuji Innovation Park, No. 58, Ping'an Road, Dafu Community, Guanlan Street, Longhua District, Shenzhen, Guangdong, China.

RoHS

CE



FR
LE TRI
+ FACILE



Boîte 1

Papier 5

Séparez les éléments avant de trier



Made in China