

SmallRig



Arca-Type Quick Release Mount Plate Kit

Operating Instruction

SmallRig Quick Release Clamp and Plate (Arca-type Compatible) 2144 includes an Arca-type clamp and a plate. Tightness of the clamp can be adjusted by stirring the tiny screw on the lever, so it is also cross-compatible with most Arca type plates. The plate is attached to the bottom of cameras or cages by screw(s). The clamp features multiple 1/4"-20, 3/8"-16 threaded holes and thorough mounting holes on the bottom, so you can mount it on tripods, jibs and other devices.

Safety Guidelines

1. Environment

Do not use the product underwater, in extreme temperatures (e.g., freezing or direct heat), corrosive environments, or excessive dust. Dry metal parts immediately after liquid contact to prevent corrosion.

2. Load Capacity

Do not exceed the maximum weight capacity indicated on the product. Overloading risks structural failure, deformation, or accidental drops.

3. Cleaning & Maintenance

Clean surfaces with a dry, soft cloth. Avoid chemicals like alcohol or solvents. Ensure dry and ventilated conditions for long-term storage.

4. Structural Integrity

Do not modify the product (e.g., drilling, cutting)—this compromises structural integrity and increases drop risks.

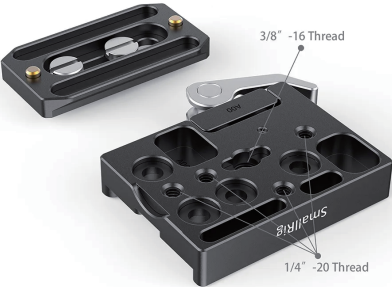
5. Malfunctions

Stop use immediately if you notice deformation, unusual noises, or loose components, and contact support.

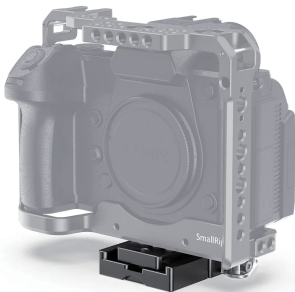
In the Box

Quick Release Clamp	× 1	1/4"-20 Screws	× 1
3/8"-16 Screws	× 1	Hex Spanners	× 1
Guarantee Card	× 1		

Product Details

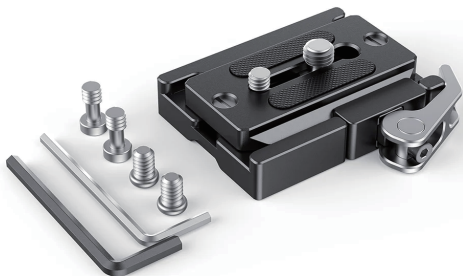


Easy to Use





Specifications



Parameters:

Product Dimensions: 72 x 70 x 14mm

Net Weight: 177g

Package Weight: 203g

Materials: Aluminum Alloy

Compatibility:

Arca-type Compatible

Manufacturer Email: support@smallrig.com
Manufacturer: Shenzhen Leqi Innovation Co., Ltd.
Add: Rooms 101, 701, 901, Building 4, Gonglianfuji Innovation Park, No. 58, Ping'an Road,
Dafu Community, Guanlan Street, Longhua District, Shenzhen, Guangdong, China.

Consignor: Shenzhen LC Co., Ltd.
Add: Room 201, Building 4, Gonglianfuji Innovation Park, No. 58, Ping'an Road,
Dafu Community, Guanlan Street, Longhua District, Shenzhen, Guangdong, China.

RoHS **CE** 



Séparez les éléments avant de trier



Made in China