

# SmallRig



## Multifunctional Cold Shoe Mount Plate with Safety Release

Operating Instruction

SmallRig Multi-Functional Cold Shoe Mount with Safety Release 2797 is designed for accepting shoe mount devices such as flashes, lights, microphones, etc. The cold shoe mount secures to rigs, brackets, and cages via a 1/4"-20 screw, and mounts to ball heads, magic arms, and monitor mounts via the integrated 1/4"-20 female thread. Featuring safety release in one end prevents the accessory from detaching accidentally to ensure your devices safe.

## Safety Guidelines

### 1. Environment

Do not use the product underwater, in extreme temperatures (e.g., freezing or direct heat), corrosive environments, or excessive dust. Dry metal parts immediately after liquid contact to prevent corrosion.

### 2. Load Capacity

Do not exceed the maximum weight capacity indicated on the product. Overloading risks structural failure, deformation, or accidental drops.

### 3. Cleaning & Maintenance

Clean surfaces with a dry, soft cloth. Avoid chemicals like alcohol or solvents. Ensure dry and ventilated conditions for long-term storage.

### 4. Structural Integrity

Do not modify the product (e.g., drilling, cutting)—this compromises structural integrity and increases drop risks.

### 5. Malfunctions

Stop use immediately if you notice deformation, unusual noises, or loose components, and contact support.

## In the Box

Cold Shoe Mount	× 21	Allen Wrench	× 1
Guarantee Card	× 1		

## Product Details



## Holds Shoe-Mounted Accessories





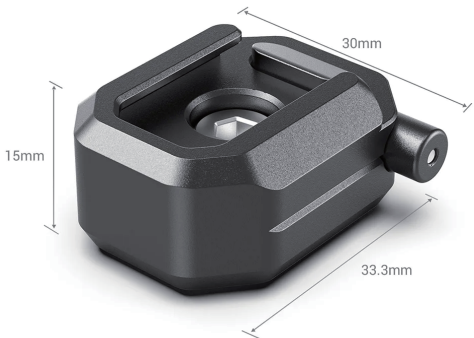
Mounts to Cages, Ball Heads, Magic Arms, and Monitor Mounts.



Connects via 1/4"-20 Screw or 1/4"-20 Female Thread.  
Safety Release Button to Prevent Suddenly Dropping Off.



# Specifications



**Product Dimensions:** 1.3 × 1.2 × 0.6in / 33.3 × 30.0 × 15.0mm

**Net Weight:** 1.1oz / 32.0g

**Package Dimensions:** 2.9 × 2.5 × 1.6in / 76 × 63 × 40 mm

**Package Weight:** 1.6 ± 0.2oz / 45.0 ± 5.0g

**Material(s):** Aluminum Alloy

Manufacturer Email: support@smallrig.com

Manufacturer: Shenzhen Leqi Innovation Co., Ltd.

Add: Rooms 101, 701, 901, Building 4, Gonglianfuji Innovation Park, No. 58, Ping'an Road,  
Dafu Community, Guanlan Street, Longhua District, Shenzhen, Guangdong, China.

Consignor: Shenzhen LC Co., Ltd.

Add: Room 201, Building 4, Gonglianfuji Innovation Park, No. 58, Ping'an Road,  
Dafu Community, Guanlan Street, Longhua District, Shenzhen, Guangdong, China.

**RoHS**



*Séparez les éléments avant de trier*



Made in China