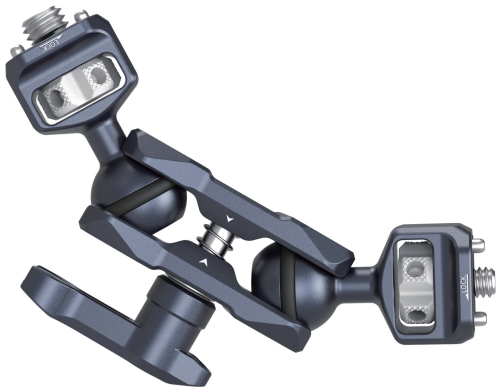


# SmallRig



## Magic Arm Support with Dual Ball Heads

(Compatible with 14-20 and 38-16 ARRI Threaded and Locating Holes)

Operating Instruction

SmallRig Magic Arm with Dual Ball Heads (1/4"-20 Screw and 3/8"-16 ARRI Locating Screw) 3874 is compact and lightweight. Each ball head, 20mm in diameter, features stretchable pins that prevent twisting. The adjustable thumb lever helps secure ball head at an appropriate angle and comes with a small magnetic wrench at the bottom to tighten the thumbwheels. At both ends of the ball head clamp there are notches which leave more space for flexible adjustment of ball heads as well as accessories mounted thereon. This item weighs only 90g, making it easy to carry around and store.

## Safety Guidelines

### 1. Environment

Do not use the product underwater, in extreme temperatures (e.g., freezing or direct heat), corrosive environments, or excessive dust. Dry metal parts immediately after liquid contact to prevent corrosion.

### 2. Load Capacity

Do not exceed the maximum weight capacity indicated on the product. Overloading risks structural failure, deformation, or accidental drops.

### 3. Cleaning & Maintenance

Clean surfaces with a dry, soft cloth. Avoid chemicals like alcohol or solvents. Ensure dry and ventilated conditions for long-term storage.

### 4. Structural Integrity

Do not modify the product (e.g., drilling, cutting)—this compromises structural integrity and increases drop risks.

### 5. Malfunctions

Stop use immediately if you notice deformation, unusual noises, or loose components, and contact support.

## In the Box

Magic Arm with Dual Ball Heads	× 1	Operating Instruction	× 1
Silicone Ring	× 2		

# Dual Ball Heads

For Rotating at Any Angle



## Notice

The monitor in the kit may interfere if rotated more than **180°**.



# Wide Compatibility

Feature one 1/4"-20 screw  
and one 3/8"-16 locating screw for ARRI



Camera



Monitor



Action Camera



Microphone

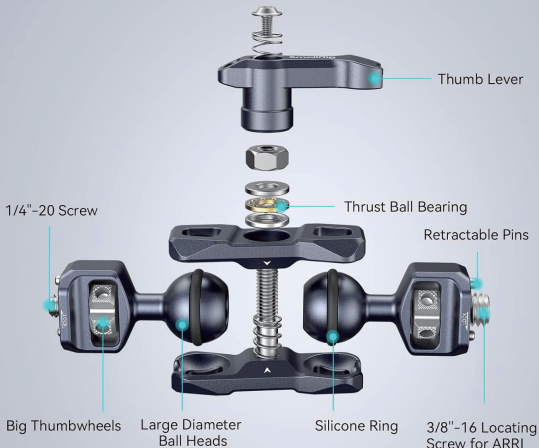


## Retractable Pins

Retractable pins on both  
accessory mounts that  
prevent twisting and  
ensure safety

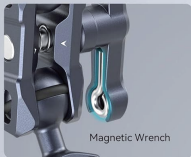


# Product Details Display

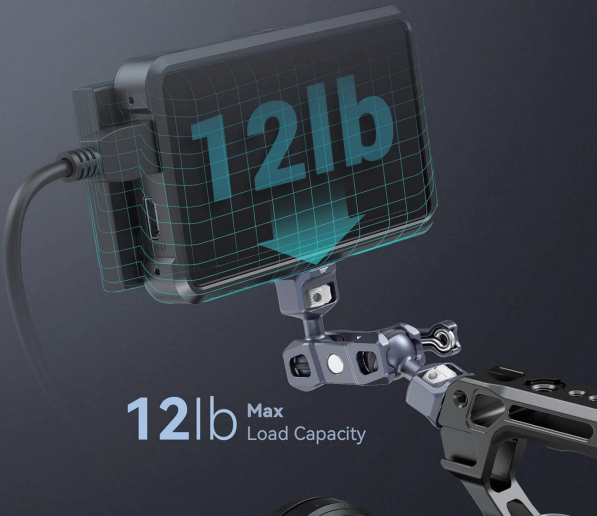


# Built-in Magnetic Wrench

A magnetic wrench at the bottom of the thumblever for convenient tightening of thumbwheels



Max Load Capacity

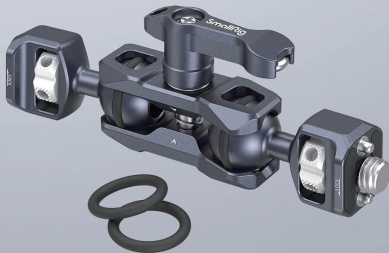


**12lb** Max  
Load Capacity

# In the Box

Magic Arm with Dual Ball Heads × 1

Silicone Ring × 2



## Specifications

ID  
**3874**

Product Dimensions  
**4.8 × 0.87 × 1.7 inch**

Package Dimensions  
**6.1 × 3.3 × 1.7 inch**

Product Weight  
**0.2 lb**

Package Weight  
**0.3 lb**

Material(s)  
**Aluminum Alloy,  
Stainless Steel**

Manufacturer Email: support@smallrig.com

Manufacturer: Shenzhen Leqi Innovation Co., Ltd.

Add: Rooms 101, 701, 901, Building 4, Gonglianfuji Innovation Park, No. 58, Ping'an Road,  
Dafu Community, Guanlan Street, Longhua District, Shenzhen, Guangdong, China.

Consignor: Shenzhen LC Co., Ltd.

Add: Room 201, Building 4, Gonglianfuji Innovation Park, No. 58, Ping'an Road,  
Dafu Community, Guanlan Street, Longhua District, Shenzhen, Guangdong, China.

**RoHS**



*Séparez les éléments avant de trier*



Made in China