



## **4" Suction Cup Camera Mount Support Kit** for Vehicle Shooting

Operating Instruction

- Thank you for purchasing SmallRig's product.
- Please follow the safety warnings.

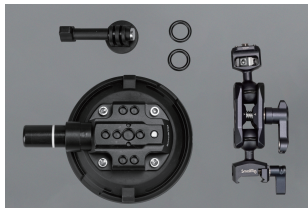
## Warnings

1. Please read this Operating Instruction carefully.
  2. It is recommended, when adhering on a vehicle, the 4" Suction Cup Camera Mount work with a cable tether and bear no more than 2 kg\* / 4.4lb. Please run the vehicle smoothly at a speed of below 80 km/h and check suction force every 2 hours.
  3. Suitable for dry, flat, glossy, solid surfaces, not for: painted surfaces, natural marble, old tiles, breathable wallpaper, diatom mud walls, unpainted wood, frosted glass, other rough or breathable materials.
  4. Works at -20°C to 60°C / -4°F to 140°F.
  5. When the safety-line indicator shows, it means vacuum loss. Pump the plunger until 100% vacuum pressure.
  6. Please follow the instructions. Products that are damaged due to improper use are not eligible for after-sales service.
  7. This product is not dustproof or waterproof, please do not use it in water.
  8. Protect the product from falling to the ground or strong impact.
  9. Do not place the product near combustible or corrosive solutions.
  10. Do not disassemble the product by yourself to avoid malfunction due to improper operation.
  11. This diagram is for illustrative purposes only, Specifications are subject to the actual product.
- \* Note:** According to the indoor experiment, the vertical load capacity is up to 2kg while using with 14" actuating arm. The laboratory data is for reference only, actual product may vary due to product enhancement.

## In the Box

4" Vacuum Suction Cup	× 1	Magic Arm	× 1
Silicone Ring	× 2	2-Prong Mount	× 1
Operating Instruction	× 1		





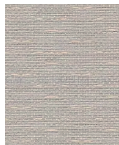
**01** Overview of the components.



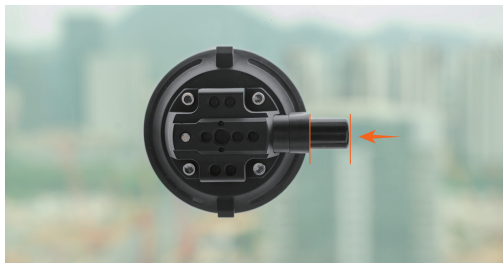
**02** Remove the dust cover of the suction cup and check the bottom of the suction cup before use, ensuring it is clean, intact, and undamaged.



**03** Identify suitable surfaces that are dry, level, smooth, and sturdy. Wipe the suction surface clean before use to ensure dryness and smoothness.



**04** Identify surfaces such as natural marble surfaces, old tile surfaces, breathable wallpaper surfaces, diatomaceous earth wall surfaces, unpainted wooden surfaces, frosted glass surfaces, and other rough or breathable material surfaces that cannot be used.



**05** Press the suction cup with one hand and push the air pump inward with the other hand. When the white marking line on the air pump is only partially retracted, it indicates that the suction is incomplete. Please continue pressing the air pump until it is tightly locked in place.



**06** Keep pushing the air pump inward until it can no longer be pushed in.



**07** The white marking line is invisible, indicating that the air pump has reached the shortest length (compared to Figure. 5) and is ready for use.



**08** Lock the action camera mount with one end of the magic arm.



**09** Insert the magic arm from the end with anti-off pin.



**10** The locking knob at the end of the magic arm's NATO clamp is pullable. If there is any interference of the suction cup during the locking process, you can pull up the locking knob at the NATO clamp end and push it to an angle where there is no interference until it locks securely in place.



**11** Repeat step 10 until it is locked



**12** Press the anti-off pin to slide out the magic arm for disassembly.



**13** When disassembling, simultaneously pull up on the handle until the suction cup unlocks.



**14** Mount the dust covers and store the suction cups for future use.

# Service & Warranty

---

Please keep your original receipt and guarantee card. Be sure the dealer has written on it the date of purchase and SN of the product. These are required for warranty service.

## After-sale Warranty Terms

SmallRig products are entitled to warranty services as of the date of payment.

- Electronic products (except V mount battery): 1-year warranty.
- V mount battery: 2-year warranty.
- Non-electronic products: 2-year warranty.

Note: In case of any conflict between our warranty period policy and applicable laws and regulations of the country / region where the products are sold, the latter shall prevail.

## This Warranty Does Not Cover

1. If users fail to adhere to the "Operating Instruction" or any "Warnings" stated in the user manual, resulting in a quality failure, it falls outside the scope of warranty coverage.
2. The product identification or SN label is removed or defaced in any way.
3. Product damage caused by problems not attributable to the quality of the products such as improper use of the products.
4. Product damage caused by unauthorized modification, disassembly, repair and other acts.
5. Product damage caused by fires, floods, lightning and other force majeure factors.

## Warranty Mode

- For the products within the scope of warranty, SmallRig will repair or replace them on the basis of specific failures; the repaired / replaced products / parts are entitled to the remaining part of the original warranty period.

## Contact Information

- You're advised to contact the online customer service personnel of corresponding shopping platform and submit a repair service application.

- You may also apply for repair service through SmallRig's service email.

Service Email: [support@smallrig.com](mailto:support@smallrig.com)

## Guarantee Card

ID No.	
Item Name	
Purchase Date	
User Name	
Mobile	
Address	
Receipt	



GAVIMOSA CONSULTORIA, SOCIEDAD LIMITADA,  
CASTELLANA 9144, 28046 Madrid,  
compliance.gavimosa@outlook.com



Sea&Mew Accounting Ltd,  
Electric Avenue Vision 25, London, Enfield EN3 7GD,  
info@seamew.net



WE ARE HERE FOR YOU  
服务与支持



ETICHETTATURA AMBIENTALE  
ENVIRONMENTAL LABELING

Manufacturer Email: support@smallrig.com

Manufacturer: Shenzhen Leqi Innovation Co., Ltd.

Add: Rooms 101, 701, 901, Building 4, Gonglianfuji Innovation Park, No. 58, Ping'an Road,  
Dafu Community, Guanlan Street, Longhua District, Shenzhen, Guangdong, China.

Consignor: Shenzhen LC Co., Ltd.

Add: Room 201, Building 4, Gonglianfuji Innovation Park, No. 58, Ping'an Road, Dafu  
Community, Guanlan Street, Longhua District, Shenzhen, Guangdong, China.

# RoHS



FR

**LE TRI  
+ FACILE**



Boîte 1



Papier 5



*Séparez les éléments avant de trier*

Made in China



# SmallRig



## 4英寸车载吸盘支撑件套件

操作指引



感谢您购买 SmallRig 产品。

请注意所有警告提示并遵循使用操作指引的所有指令。

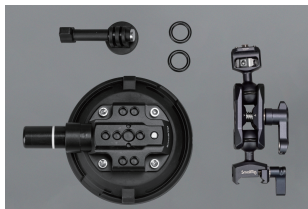
## 重要提示

1. 请认真阅读本操作指引。
2. 车载使用时，建议搭配安全挂绳使用，建议承重上限2 kg\*，并将车速控制在80 km/h以下，在平坦的道路上使用，并严格2小时检查一次产品的吸附状态。
3. 吸盘支架适用于干燥、平整、光洁、坚固的表面。不适用：涂料表面、天然大理石表面、老旧瓷砖面、透气墙纸、硅藻泥墙面、未喷漆的木头表面、毛玻璃表面、其他粗糙或透气的材质表面。
4. 适用温度为 -20°C ~ 60°C。
5. 使用中，抽气阀安全线露出即说明需要立即抽气，按压抽气阀至安全线不可见，方可继续使用。
6. 请遵循说明操作，非正常条件下造成的产品损伤不予售后。
7. 请勿在水中使用，本产品不具备防尘、防水功能。
8. 请勿让产品掉落到地面或强烈冲击。
9. 请勿将产品放置在可燃或腐蚀性溶液附近。
10. 请勿擅自拆卸本产品，避免因操作不当造成产品故障。
11. 此图仅供操作指引，具体以实物为准。

**\* 备注：**室内试验，垂直（侧面）吸附，力臂14"，重心垂直于吸附面，建议承重上限为2kg，实验室数据，仅供参考，具体以实际使用情况为准。

## 包装清单

4英寸拓展吸盘	× 1	魔术手	× 1
硅胶圈	× 2	运动相机二爪连接座	× 1
操作指引	× 1		



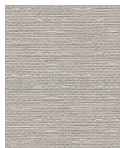
## 01 产品平铺图。



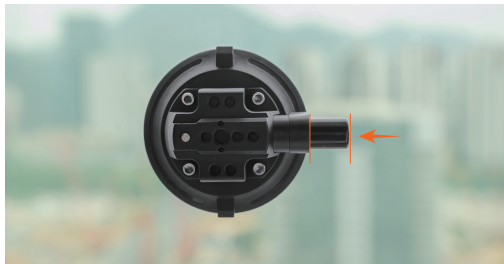
## 02 使用前取下吸盘防尘罩，并检查吸盘底部干净、完整无破损。



## 03 适用于干燥、平整、光洁、坚固的表面。使用前可擦拭吸附面，保证干燥平整。



**04** 涂料表面、天然大理石表面、老旧瓷砖面、透气墙纸、硅藻泥墙面、未喷漆的木头表面、毛玻璃表面、其他粗糙或透气的材质表面不能使用。



**05** 一只手按压吸盘，另外一只手向内推动抽气泵，抽气泵白色警示线刚刚收进去时，依然处于未完全吸附状态，仍需要继续按压抽气泵使之锁紧。



**06** 持续向内推抽气泵，直到不能再推为止。



**07** 白色警示线完全推进，气泵已经达到最短状态（对比图5），判定达到可用状态。



**08** 将运动相机底座锁紧在魔术手一端。



**09** 从带有防脱柱端划入魔术手。



**10** 魔术手的滑槽端锁紧旋钮可以提拉，当锁紧过程中，遇到和吸盘干涉时，可以向上提拉滑槽端旋钮后推至不干涉的角度，直到锁紧。



**11** 重复步骤10，直到锁紧。



**12** 拆卸时，按下防脱柱，划出魔术手。



**13** 拆卸时，同时向上拉住抠手位，直到吸盘解锁。



**14** 盖好吸盘防尘罩，收纳以备下次使用。

# 保修条款

---

请保留您的原始购买单据及保修卡,同时包含您的购买日期、产品序列号等,这些资料质保服务时均需要提供。

## 售后质保条款

SmallRig产品自下单付款之日起享有质保服务。

- 电子产品(除V口电池): 1年质保。
- V口电池: 2年质保。
- 非电子产品: 2年质保。

注:若销售地国家或地区的适用法律法规有冲突的,以销售地国家或地区有关质保期的法律法规为准。

## 质保无效说明

1. 当用户违反操作指引或用户手册中“重要提示”任何一条导致的质量失效,不在质保范围内。
2. 产品序列号标识已经被撕毁或无法辨识,不在质保范围。
3. 产品使用不当等非产品本身质量问题,而造成的产品损坏,不在质保范围。
4. 非官方指导的私自改装、拆解、维修等行为而造成的损坏,不在质保范围。
5. 因火灾、水灾、雷击等不可抗力造成的产品损坏,不在质保范围。

## 维修方式

- 属于质保范围的,SmallRig 根据产品具体的故障对产品进行维修或更换;维修后的产品 / 部件享受原有保修期的剩余时长。

## 联系方式

- 建议您优先前往相应购买平台联系在线客服,提出产品维修申请。
- 您也可以通过 SmallRig 服务邮箱申请维修服务。

服务邮箱:support@smallrig.com

## 保修卡

ID编号	
产品名称	
购买日期	
用户姓名	
用户电话	
用户地址	
购买单据	

LQ-B799-18

执行标准: GB/T 26572-2011

制造商: 深圳市乐其创新股份有限公司

地址: 中国广东省深圳市龙华区观澜街道大富社区平安路58号共联富基创新园4栋101、701、901

委托商: 深圳市乐长科技有限公司

地址: 中国广东省深圳市龙华区观澜街道大富社区平安路58号共联富基创新园4栋201



中国制造

