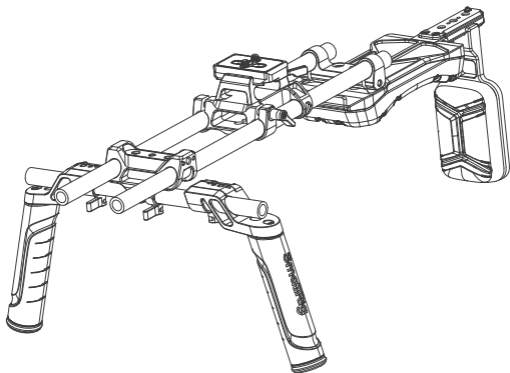


# SmallRig



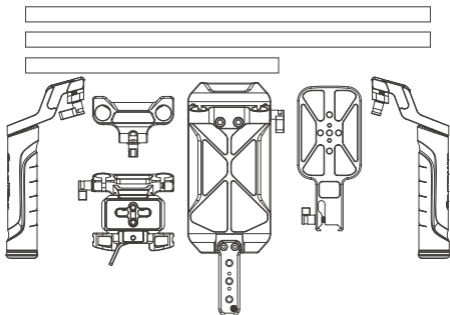
## Shoulder Rig Kit (Classic Version)

### 肩扛套件（经典版）

Operating Instruction / 操作指引

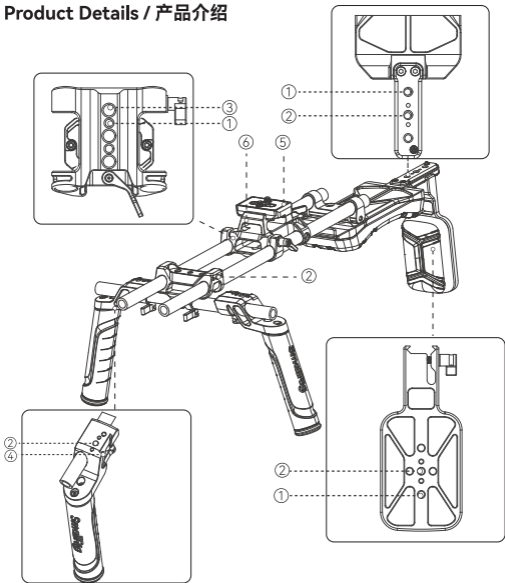
- Thank you for purchasing SmallRig's product.  
感谢您购买 SmallRig 产品。
- Please read this Operating Instruction carefully.  
使用本产品之前，请仔细阅读操作指引。
- Please follow the safety warnings.  
请注意所有警告提示并遵循使用操作指引的所有指令。

## In the Box / 包装清单



|   |    |                                     |  |    |
|---|----|-------------------------------------|--|----|
| Mount Plate Kit with Dual 15mm Rod Clamp<br>15mm双管系统安装座套件 |    |                                     |  | ×1 |
| Handle<br>手柄  | ×2 | Back Pad<br>背托                      |  | ×1 |
| Handle Connector<br>手柄连接件                                 | ×1 | Shoulder Pad<br>肩托                  |  | ×1 |
| 15mm Rod (400mm)<br>15mm连接管 (400mm)                       | ×2 | 15mm Rod (300mm)<br>15mm连接管 (300mm) |  | ×1 |
| Operating Instruction<br>操作指引                             | ×1 | Guarantee Card<br>保修卡               |  | ×1 |

## Product Details / 产品介绍



① 1/4"-20 Threaded Hole  
1/4"-20螺纹孔

② 1/4"-20 Locating Hole  
1/4"-20定位孔

③ 3/8"-16 Threaded Hole  
3/8"-16螺纹孔

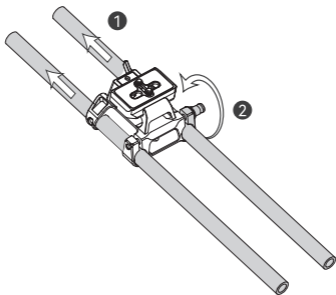
④ Cold Shoe  
冷靴

⑤ Arca-Swiss Plate  
阿卡快装板

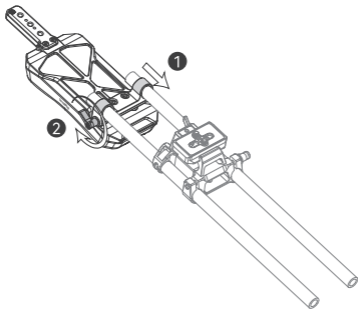
⑥ Arca-Swiss Clamp  
阿卡安装座

## Installation / 安装步骤

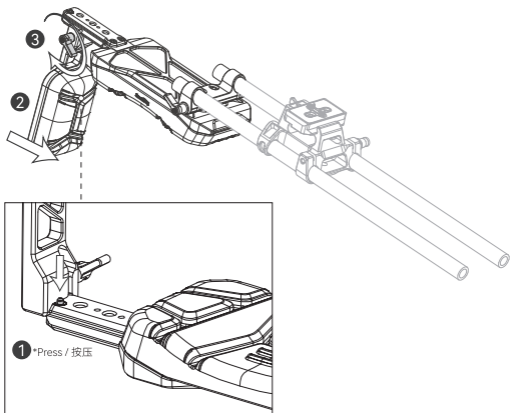
### Step 1 / 第一步



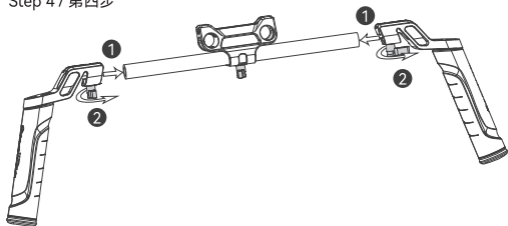
### Step 2 / 第二步



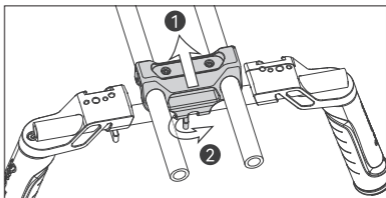
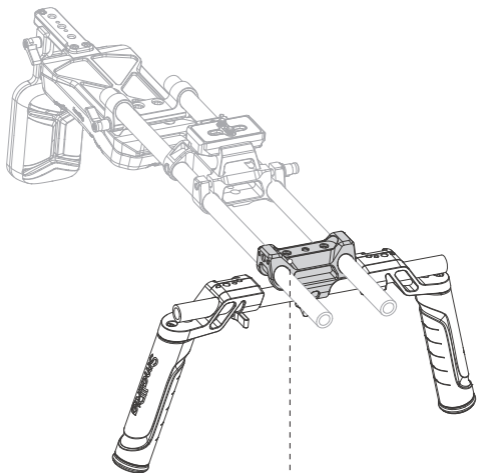
### Step 3 / 第三步



### Step 4 / 第四步



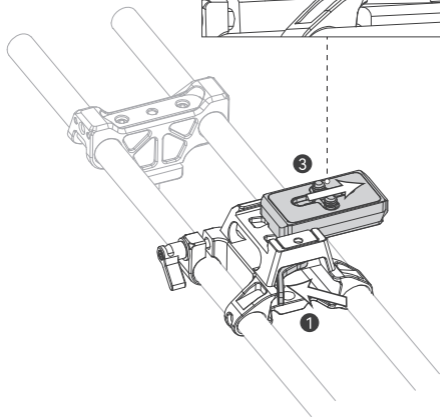
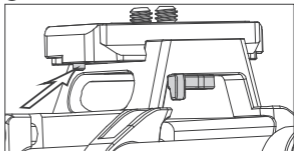
Step 5 / 第五步



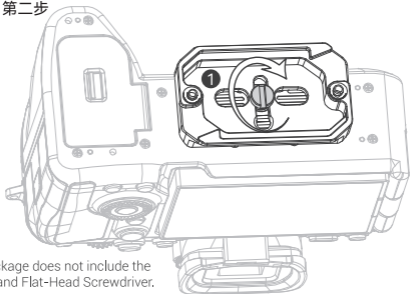
## Camera Installation / 相机安装步骤

### Step 1 / 第一步

2 \*Press / 按压



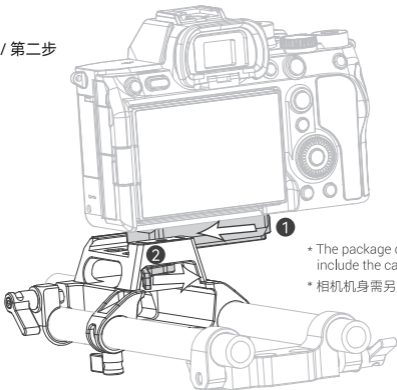
## Step 2 / 第二步



\* The package does not include the camera and Flat-Head Screwdriver.

\* 相机机身和锁紧一字扳手需另购。

## Step 2 / 第二步



\* The package does not include the camera.

\* 相机机身需另购



## Specifications / 产品参数

|                            |   |
|----------------------------|---|
| Product Dimensions<br>产品尺寸 | 23.2 × 13.3 × 8.60in<br>589 × 337 × 218mm |
| Product Weight<br>产品重量     | 47.6 ± 0.2oz<br>1350 ± 10g                |
| Material (s)<br>主要材质       | Aluminum Alloy<br>铝合金                     |
| Compatibility<br>适配性       | Universal<br>通用                           |

\* 技术参数如有改动，以实物为准，恕不另行通知。

Specifications subject to change without prior notice. Please refer to the physical product for the most up-to-date information.

Manufacturer: Shenzhen Leqi Innovation Co., Ltd.

Add: Rooms 103, 501 and 601, Building 5, Fenghe Industrial Park, Nos. 1301-50  
Guanguang Road, Longhua District, Shenzhen, Guangdong, China.

制造商: 深圳市乐其创新股份有限公司

地址: 中国广东省深圳市龙华区观澜街道新澜社区观光路 1301-50 号丰和工业园  
厂房 5 栋 103、501、601

Consignor: Shenzhen LC Co., Ltd.

Add: Rooms 602, Building 5, Fenghe Industrial Park, No. 1301-50 Guanguang Road,  
Xinlan Community, Guanlan Street, Longhua District, Shenzhen, Guangdong, China.

委托商: 深圳市乐长科技有限公司

地址: 中国广东省深圳市龙华区观澜街道新澜社区观光路 1301-50 号丰和工业园  
厂房 5 栋 602

执行标准: GB/T 26572-2011

LQ-P1365-18



*Séparez les éléments avant de trier*

中国制造  
Made in China

合格证  
已检验