



6" Suction Cup Camera Mount

User Manual

Thank you for purchasing SmallRig products.

Warnings

1. Please read this User Manual carefully.
2. Service Conditions: Suitable for dry, smooth, and clean surfaces Do not mount onto coated surface, marble, old tiles, porous wallpaper, mud walls, unpainted wooden wall, frosted glass, or other rough, and breathable surfaces.
3. Suitable Temperature: -20°F ~ 140°F.
4. Please follow the instructions correctly, there is no after-service while having damage to the product caused by abnormal conditions.
5. This product is not dustproof and waterproof, please do not use it in water.
6. Protect the product from falling to the ground or strong impact.
7. Do not place the product near combustible or corrosive solutions.
8. Do not disassemble the product by yourself to avoid malfunction due to improper operation.



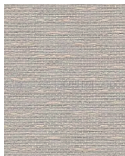
01 Overview of the components.



02 Remove the dust cover of the suction cup and check the bottom of the suction cup before use, ensuring it is clean, intact, and undamaged.



03 Identify suitable surfaces that are dry, level, smooth, and sturdy. Wipe the suction surface clean before use to ensure dryness and smoothness. Press the suction cup with one hand and push the air pump inward with the other hand.



04 Identify surfaces such as natural marble surfaces, old tile surfaces, breathable wallpaper surfaces, diatomaceous earth wall surfaces, unpainted wooden surfaces, frosted glass surfaces, and other rough or breathable material surfaces that cannot be used.



05 When the white marking line on the air pump is only partially retracted, it indicates that the suction is incomplete. Please continue pressing the air pump until it is tightly locked in place.



06 Keep pushing the air pump inward until it can no longer be pushed in.



07 The white marking line becomes invisible, indicating that the air pump has reached the shortest length (compared to Figure. 5) and is ready for use.



08 When disassembling, simultaneously pull up on the handle until the suction cup unlocks.



09 Mount the dust cover and store the suction cup for future use.