

Cage for Sony Alpha 9 III

User Manual

Thank you for purchasing SmallRig's product.

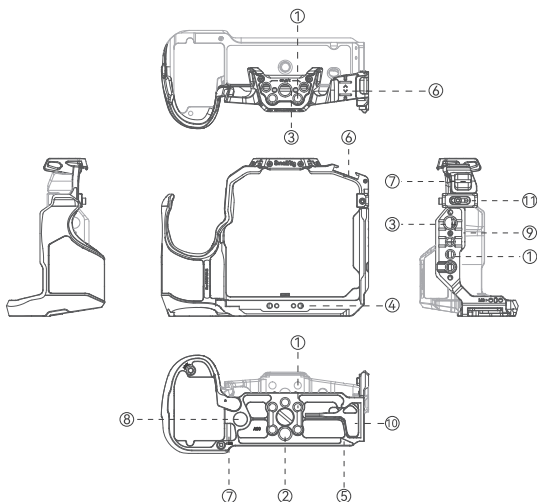
Warnings

- Please read this User Manual carefully.
- Please read the instruction manual carefully and follow all safety warnings.

In the Box

Cage	× 1	User Manual	× 1
HDMI Cable Clamp	× 1		

Product Details



① 1/4"-20 Threaded Hole

② 3/8"-16 Threaded Hole

③ ARRI 3/8"-16 Locating Hole

④ M4 Threaded Hole

⑤ Arca-Swiss Plate

⑥ Cold Shoe Mount

⑦ Strap Slot

⑧ QD Socket

⑨ NATO Rail

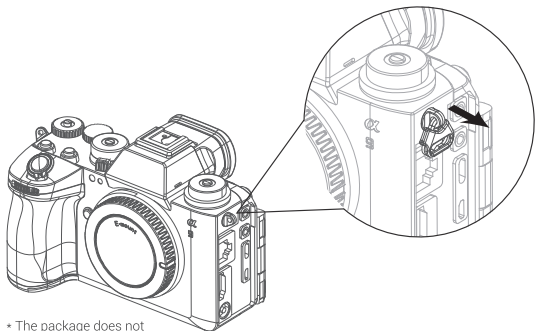
⑩ Dual Head Wrench

⑪ Side Lock Adapter

Cage Installation

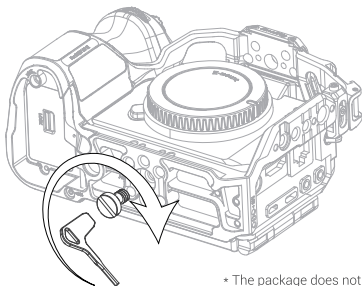
Before Installation:

Please remove the camera lens and the shoulder strap hook on left side



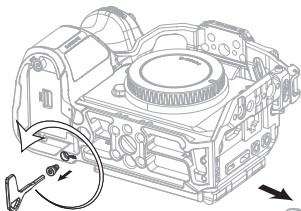
* The package does not include the camera

Step1: Use the Dual Head Wrench to lock the bottom 1/4"-20 screw

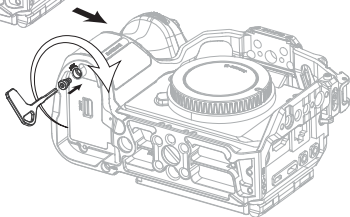


* The package does not include the camera

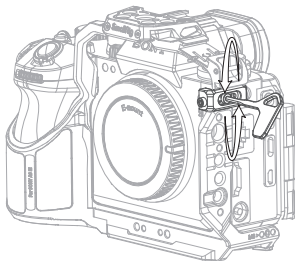
Step2: Use the Dual Head Wrench to remove the M4 screws at the bottom of the cage, align and tighten the M4 screws to the corresponding positions to secure the cage



* The package does not include the camera

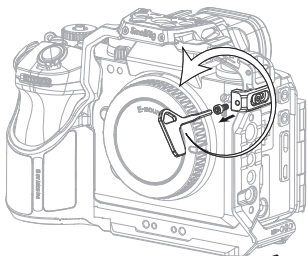


Step3: Use the Dual Head Wrench to loosen the screw that fixes the locating block, but do not unscrew it completely. Align and tighten it close to the camera strap groove

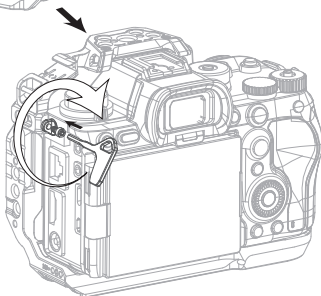


* The package does not include the camera

Step4: Use the Dual Head Wrench to remove the screw at the front of the locating block. Align the removed screws into the camera strap slot and secure the cage and camera by tightening them with the Dual Head Wrench



* The package does not include the camera



Specifications

Compatibility	Sony Alpha 9 III
Product Dimensions	165.0 × 70.3 × 112.5 mm / 6.5 × 2.8 × 4.4in
Product Weight	194.0 ± 5.0g / 6.8 ± 0.2oz
Material (s)	Aluminum Alloy, Stainless Steel