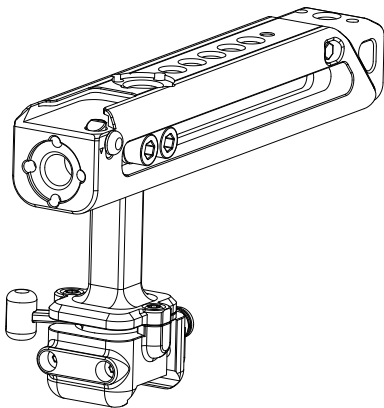


# SmallRig



## **Snap-on NATO Top Handle**

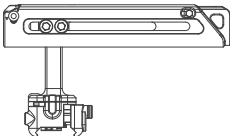
User Manual

Thank you for purchasing SmallRig's product.

## Warnings

- Please read this User Manual carefully.
- Please keep this User Manual. Always keep this User Manual when passing the products on to the third party.
- Heed all warnings and follow all instructions in this User Manual.

## In the Box



Top Handle × 1

## Compatibility

Cages and mounting plates, etc. (with NATO rail)

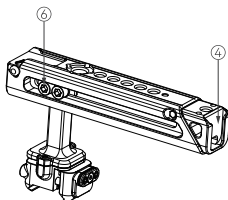
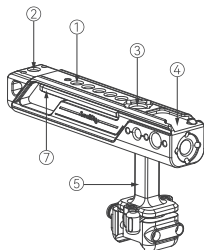
## Specifications

Product Dimensions: 134 × 78 × 31.6mm

Product Weight: 170 ± 5g

Material(s): Aluminum Alloy

## Product Details



① 1/4"-20 Threaded Hole

② 1/4"-20 Locating Hole

③ ARRI 3/8"-16 Locating Hole

④ Cold Shoe Mount

⑤ Handle Adapter

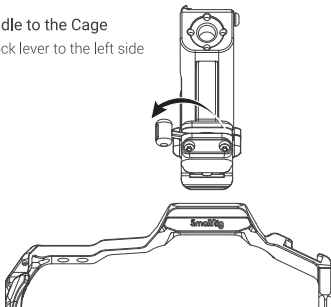
⑥ M5 Screw

⑦ Allen Wrench

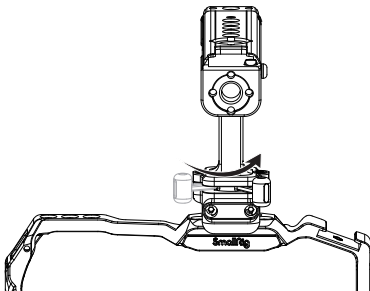
# Installation Instruction

## 1. Install the Handle to the Cage

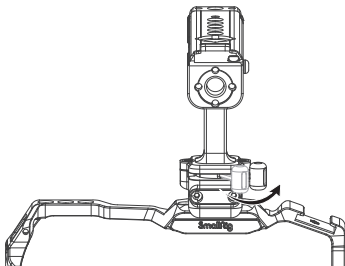
Step 1: Push the lock lever to the left side



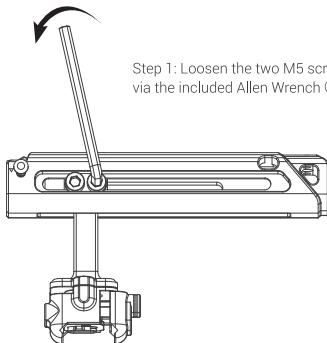
Step 2: Align the NATO Rail and press NATO clamp until locked securely



Step 3: Push the lock lever to the right side to secure



## 2. Front to Rear Adjustable



Step 2: After adjusting to the suitable position, tighten the two M5 screws ⑥ to secure the handle adapter ⑤

